



Saint Francis Xavier

CATHOLIC SIXTH FORM COLLEGE

PROSPECTUS

2026 | 2027



OUR MISSION

IER CATHOLIC SIXTH FORM COLLEGE



Saint Francis Xavier
CATHOLIC SIXTH FORM COLLEGE

Saint Francis Xavier Catholic Sixth Form College is an inclusive educational community rooted in the Catholic faith with Christ at its centre. Our aim is to provide a broad curriculum which emphasises the pursuit of excellence and focuses on career preparation, leadership and service to others. We are committed to preparing the whole person to lead a life of purpose and success in a just and sustainable world.



CONTENTS

Information

Welcome from the Principal	4
A Catholic Sixth Form College	5
Why Study at a Sixth Form College?	6
Why Choose Saint Francis Xavier Catholic Sixth Form College?	7
Saint Francis Xavier College: The Facts	8
Facilities	9
Student Enrichment	10
Student Support	11
Careers Guidance	12
Aiming High	13
Information For Parents & Guardians	14
Overseas Students	15
Working with Schools	16
Results 2025	17
Highlights from 2024-25	18-19
Course Options Explained	20-21
How to Apply	22

A Levels and Applied Qualifications

Art & Design – Fine Art	24
Art & Design – Graphic Communication	25
Art & Design – Photography	26
Biology	27
Business	28
Chemistry	29
Classical Civilisation	30
Criminology	31
Economics	32
English Language & Literature	33
English Literature	34
Environmental Science	35
Extended Project Qualification (EPQ)	36
French	37
Geography	38
History	39
Italian	40
Law	41
Law (Applied)	42
Mathematics	43
Mathematics (Statistics)	44

Further Mathematics	45
Media Studies	46
PE	47
Physics	48
Politics	49
Portuguese	50
Psychology	51
Psychology (Applied)	52
Religious Studies	53
Sociology	54
Spanish	55

T Levels

Accounting	57
Education and Early Years	58
Management & Administration	59
Media Broadcast & Production	60

BTEC and UAL Extended Diplomas

Creative Practice: Art, Design & Communication	62
Business	63
Creative Media Production & Technology	64
Engineering	65
Football Academy	66
Health & Social Care	67
Information Technology	68
Performing & Production Arts	69
Applied Science	70
Sport & Exercise Science	71
Travel & Tourism	72

BTEC Level 2 Extended Certificate

Business	74
Health and Social Care	75
Information Technology	76
Creative Media Production and Technology	77

Introductory Diploma (Foundation Learning)	79
--	----

Entry Requirements	80-82
--------------------	-------

MESSAGE *From Principal Graham Thompson*



It is with great pleasure that I welcome you to Saint Francis Xavier Catholic Sixth Form College. Here, you will find more than just a place to study – you will become part of a dynamic, supportive, and inclusive community. Our college brings together ambitious, curious, and compassionate young people who are ready to embrace new opportunities and to challenge themselves to reach their full potential.

At Saint Francis Xavier, we believe in developing the whole person. Our commitment goes beyond academic achievement; we aim to equip you with the confidence, values, and skills needed to thrive in higher education, employment, and life beyond college. With an extensive range of A levels, BTECs, UAL Diplomas and T Levels, our students benefit from expert teaching in modern, state-of-the-art facilities.

Our recent Ofsted inspection in November 2023 endorsed the quality of our work, recognising our college as Good or Outstanding in all categories. This is a testament to the dedication of our staff and the success of our students. We take immense pride in our outstanding achievement rates and the impressive destinations our students secure — whether that's university, further training, or rewarding employment.

From the moment you join us, you will be supported every step of the way. Our dedicated teachers and pastoral team are here to provide guidance, encouragement, and practical advice — ensuring you are well-prepared for your next steps, whatever they may be. We are committed to creating an environment where every student feels valued, respected, and inspired to become a leader who makes a positive impact in the world.

Our college community is built on gospel values and mutual respect, reflected in our core principles: Kindness, Service, Faith, Inclusion, Courage, Honesty, Respect, and Forgiveness. Inspired by the words from St. Matthew's Gospel to ***“be the light that gives light to the world,”*** we encourage all our students not only to achieve their personal best, but also to become ethical and compassionate members of society.

I am excited about the journey ahead and look forward to welcoming you to Saint Francis Xavier in September 2026.

With my very best wishes,

Graham Thompson
PRINCIPAL

A CATHOLIC SIXTH FORM COLLEGE



THE CHAPEL

Saint Francis Xavier Catholic Sixth Form College has a beautiful Chapel situated in Xavier Wing which has been a place of prayer and worship for over 120 years. The Chapel affords a rare opportunity for students and staff of any faith or none to take some time for peace and reflection. The Blessed Sacrament is reserved in the Chapel which, for Catholics, designates this a particularly sacred space. Mass is held once a month during lunch break and all students and staff are welcome to attend or take part. Additional ecumenical services take place at key times in the academic and liturgical calendar.

PRAYER ROOM

The College has a designated gender-segregated Prayer Room where prayer mats and beads are available for staff and students to use. Like the Chapel, the College prayer room affords any member of the College community a quiet space in which to reflect and pray.

CHAPLAINCY DEPARTMENT

Chaplaincy is an integral part of College life at Saint Francis Xavier Catholic Sixth Form College. Our Chaplain provides our community with opportunities to explore and deepen spiritual beliefs through voluntary prayer services, bible study, charity work opportunities and residential retreats.

The chaplaincy base is a social space open to every member of the College community. Located in Room 049, close to the College entrance, it provides a safe space where students can meet, relax and discuss issues that affect them. Our chaplaincy team works alongside the College pastoral team to support individuals coping with the stresses of daily life and particular challenges such as bereavement, ill health and loss.

MISSION STATEMENT

Saint Francis Xavier Sixth Form College is an inclusive educational community rooted in the Catholic faith with Christ at its centre. Our aim is to provide a broad curriculum which emphasises the pursuit of excellence and focuses on career preparation, leadership and service to others. We are committed to preparing the whole person to lead a life of purpose and success in a just and sustainable world. We express our commitment in the following values:

**Kindness | Service | Faith | Inclusion
Courage | Honesty | Respect | Forgiveness**



Outreach work with the local community is an important aspect of the College chaplaincy team that many students get involved with, including work with local primary schools, homeless charities and care homes. The College's gospel choir also rehearses in the base.

CORE RELIGION & PHILOSOPHY

It is a requirement that all students participate in Core Religion & Philosophy for one lesson every week. This programme allows students to debate moral and spiritual matters. The programme considers a wide range of issues including relationships, justice, science and religion, along with an examination of the different faith traditions. Students also have the opportunity to reflect upon, to question and to debate matters of personal and social importance. Students complete a workbook throughout their course to receive a NOCN qualification in Theology and Religious Studies.

EQUALITY AND DIVERSITY

Our Christian mission demands that we recognise the dignity and equality of every individual. We are proud of our diversity and support one another in resisting and challenging prejudice and discrimination. We have worked closely with the National Centre for Diversity to achieve the Investors in Diversity Award. We have an equality and diversity group comprising both staff and students which promotes the aims and objectives inherent in our mission. Each of our subject areas identify how they contribute to our equality and diversity objectives in their lessons and every opportunity is taken to ensure that equality and diversity themes are included in our comprehensive tutorial programme and faculty gatherings.

Although we are a Catholic College, our core value of inclusion means that we welcome students from all faiths and none.

WHY STUDY AT A SIXTH FORM COLLEGE?

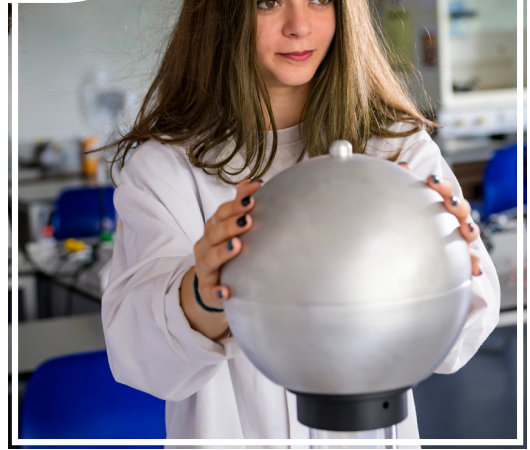
● **Specialists** – all of our teaching, facilities and support services are specially designed for 16-18 year olds and their specific needs, and run by experts with years of experience working with this age group.

● **Course choice** – we can offer a much wider range of courses that most schools simply can't deliver.

● **Independence** – the experience of making that step from one institution to another will help you develop confidence, independence and maturity. Outside of lesson time we will support you to work independently, and help you manage your time, deadlines, study and workload in a way that best suits you. We treat you like an adult, and help to prepare you for your next stage of university or work.

● **A fresh start** – our students relish the chance to meet a new group of like-minded people, make new friends and explore new opportunities in a fresh, campus environment.

● **Enterprise and employability links** – through numerous work and placement opportunities, guest speakers from many different professions, and high-quality careers support, sixth form colleges can offer the perfect bridge between education and the work place.



HOW ARE SIXTH FORM COLLEGES DIFFERENT FROM FURTHER EDUCATION COLLEGES?

● **Peer group environment** – Unlike FE colleges, where young people can be studying alongside adults, your classmates will be in the same age group as you.

● **Support** – the majority of sixth form colleges provide a lot of support when it comes to day-to-day learning, careers guidance and university preparation and application. We have processes in place to make sure no student falls behind, as well as tailored support for everyone's learning needs and future ambitions. This level of support means sixth form colleges have high retention rates.

● **Safety and Welfare** – all our staff are trained and experienced in the issues faced by the 16-18 age group, and take the welfare of all our students seriously. Students can access support and counselling from dedicated welfare staff for both academic and personal issues.

● **Community** – sixth form colleges tend to have far fewer students than further education colleges that can have up to 10,000 students, including adults. At Saint Francis Xavier, our students are all aged between 16-19 and we have a wide range of clubs and groups that bring like-minded students together for both work and play.



WHY CHOOSE SAINT FRANCIS XAVIER CATHOLIC SIXTH FORM COLLEGE?

COURSE CHOICE

Unlike many other sixth forms and sixth form colleges, we offer the opportunity to take any combination of 30 A level and Level 3 Applied Diploma subjects. Students interested in vocational programmes can choose from 11 Level 3 Extended Diplomas, including BTEC* and University of the Arts courses, as well as 4 T Levels - the new government-backed, career-focused qualification for 16-19 year olds. We also offer BTEC Level 2 and Foundation options, along with GCSE Maths and English language retake programmes.

OFSTED RATED 'GOOD' WITH 'OUTSTANDING' FEATURES

Saint Francis Xavier Catholic Sixth Form College has been graded Good with Outstanding features by Ofsted.

Their report, published in November 2023 stated:

- *"Students enjoy their lessons and recognise the value of their studies."*
- *"Teachers have 'high expectations of students' work' and 'give students useful written and verbal feedback that helps them improve their work over time."*
- *"Staff swiftly and robustly challenge students when their behaviour occasionally falls short of the high expectations leaders and staff set."*
- *"Students 'enjoy the wide range of enrichment activities on offer... such as football, netball and theatre trips."*

FACILITIES

We have an impressive array of facilities for students. The Learning Resource Centre rivals those found in universities and all students have free access to the well-appointed and recently fully refitted fitness suite and extensive sports facilities, including our sports hall and all-weather pitch. Students also have access to music and media studios, a reduced price Costa and the quad - our outdoor garden - for study and relaxation. Our Chapel offers space for calm reflection.

STUDENT ENRICHMENT

Student enrichment plays an integral part in our student programme at Saint Francis Xavier. Examples include:

- **Speakers** – we have a rich programme of visiting speakers (Recent speakers have included SFX alumnae Florence Eshalomi MP, Nicola O'Reilly from the Bank of England, celebrity barber Sheldon Edwards and Colleen Harris, former Press Secretary to His Majesty King Charles III).

- **Educational outings** – these have included the Model United Nations conference in New York, an exchange trip to Seville and an English Literature trip to Paris to explore the city's literary heritage.

- **Sport** – all students are encouraged to get involved in our sports programmes. This includes use of our amazing sports facilities such as our fitness suite, sports hall and outdoor pitch and joining our many and varied sports clubs and teams.

- **Clubs and Groups** – we have a large number of clubs and groups, including our Student Union, with a student-elected President and Vice President representing students' needs and interests.

ACADEMIC AND CAREERS SUPPORT

Our dedicated academic and careers support teams help every student reach their full potential and achieve their desired next steps. We cover the full range of support needed, from help to stay on track, to special support for Oxbridge and Russell Group applicants (see page 13) and those going on to study medicine.

PROGRESSION TO UNIVERSITY

The proportion of our students who go on to study at university is higher than many other sixth form colleges. Over 94% of our UCAS applicants progressed to university this year - far higher than other sixth form colleges. Universities our students are now studying at include Durham, Exeter, Bristol, King's College London, Loughborough, Queen Mary, University of London, UCL, Manchester, Nottingham, Southampton, York and many more Russell Group and other top universities.

STUDENT SUPPORT

We have an excellent pastoral care system. Each student has a Personal Tutor to guide them alongside their subject teachers. We have a specialist welfare team, Designated Safeguarding Officer, College Counsellor and a Student Welfare Officer on hand to support students experiencing personal worries or concerns. We also have an Additional Learning Support team who are there to help students with specialist learning needs, as well as any student who is struggling academically.

CATHOLIC ETHOS

As a Catholic college we support and promote values such as kindness, inclusion and respect for everyone; we pride ourselves on having a vibrant and supportive community. We welcome everyone of any faith or none. For those who want to make use of them, we have an on-site Chapel and Multi-Faith Prayer Room.

* See page 21 for information on BTEC reforms

SAINT FRANCIS XAVIER: THE FACTS



Saint Francis Xavier Catholic Sixth Form College was
FOUNDED in 1985



There has been a school or college on the site
SINCE 1897



We have students joining us from **ALL OVER THE WORLD** *including*
America, Canada, Italy, Portugal, Spain and South Africa to name a few!



THE COLLEGE IS NAMED AFTER *Saint Francis Xavier who was born*
Francisco de Jasso y Azpilicueta (7 April 1506 – 3 December 1552.)



SOME OF OUR FORMER FAMOUS STUDENTS *include rapper Tinie*
Tempah, Florence Eshalomi MP, actor Calvin Demba, Team GB diver
Desharne Bent-Ashmeil and DJ and TV presenter Yinka Bokinni



Our secluded and secure campus is **NEXT TO CLAPHAM**
COMMON AND COVERS THREE ACRES, *including an*
all-weather sports pitch and a quad for students to relax in



SAINT FRANCIS XAVIER IS AN INCLUSIVE COLLEGE
so we welcome students of
all faiths, and none



THE COLLEGE OFFERS OVER
50 COURSES, *including*
A levels, T Levels and Level 2 and
3 BTEC/UAL Diplomas



FACILITIES



Saint Francis Xavier Catholic Sixth Form College can offer you the very best in learning and recreational facilities. Our computer suites, science labs, drama, media and music studios and gym are furnished with all the equipment to help you succeed and have fun while you're here.

LEARNING RESOURCES CENTRE (LRC)

The Learning Resources Centre provides a physical and digital library that includes a comprehensive range of physical and digital resources of over 20,000 books with access to millions of articles, eBooks, illustrations and videos. WiFi access is available for personal mobiles, tablets and laptops (including loanable iPads and laptops). It also provides a large number of study cubicles, quick access PCs and 70 bookable PCs. Students will find an environment conducive to individual research and silent study alongside a discrete collaboration study room. The LRC team offer independent learning support as well as library and research methodology seminars throughout the year. It is also possible to make a booking for a class, group or individual appointment.

DIGITAL INNOVATION

At Saint Francis Xavier College, we are constantly striving to raise the quality and standard of learning experiences, as well as the skills and overall performance of our students. Digital technologies are an important part of a student's experience at SFX, and the College has a digital innovation strategy to incorporate technology into teaching and learning. In order to raise student engagement, curriculum standards and performance, we encourage students to use a digital device, such as an iPad or laptop in lessons, and we have partnered with Apple to embed the use of digital tools and systems into our everyday learning and teaching. The use of digital tools across the College supports students' learning, improves their outcomes and provides them with the

digital skills necessary to enter a world of work where technology and innovation are constantly evolving.

THE FITNESS SUITE

Saint Francis Xavier Catholic Sixth Form College's Fitness Suite is the ideal environment to achieve your personal fitness goals. The suite has been completely upgraded with brand new equipment for a wide range of fitness activities, including cardio, free weights, weights machines, cross training and functional training. Weekly gym clubs are available to all students once they complete their induction from our qualified strength and conditioning coach.

MUSIC RECORDING STUDIOS

The Music Studio was re-opened following a refurbishment in June 2017 by Saint Francis Xavier alumnus Tinie Tempah. The Music Studio can be booked out by any student, whether they are on a related course or not. Our Music Technician will work with students to assist with recording and producing music.

CATERING FACILITIES

We have a large canteen, serviced by the largest independent caterer in the UK. All products are provided by local and sustainable suppliers so they can present fresh, healthy and tasty food for you.

You will find:

- Costa with student-friendly prices
- Low-priced hot breakfast
- Inexpensive sandwiches and daily lunch deals

OTHER FACILITIES AT SAINT FRANCIS XAVIER

- Drama Studio
- Sports Hall
- Mac Computer Suites
- All-Weather Multi-Use Game Area
- Chapel and Prayer Room

STUDENT ENRICHMENT

THE ENRICHMENT PROGRAMME

Our expert teachers and staff work very hard to ensure that when you come to Saint Francis Xavier Catholic Sixth Form College you gain a well-rounded experience both inside and outside of the classroom. We offer a huge range of activities which will complement your main programme of study along with those which offer you time to enjoy and interact with other students beyond class or tutor group. These include theatre trips, film club, mindfulness sessions, running club, badminton, table tennis, basketball, martial arts, culture café, creative writing, cricket academy, weight training, jewellery making, young enterprise club and many more. You can even audition for our Christmas production!

COURSE ENHANCEMENT

Within your chosen courses of study there are opportunities to hear from visiting speakers and to participate in educational visits both in the UK and abroad. Recently, students have visited universities to take part in competitions, taster days, museums and exhibitions to enhance the courses they study. Our careers department also organises internal events such as the Higher Education fair and workshops with universities to aid with applications for study following College.

SPORT

Students are encouraged to participate in our many sports programmes and facilities, including our state-of-the-art fitness suite, sports hall and MUGA outdoor pitch. We have a large number of sports clubs and teams, including football, basketball, cricket, netball, trampolining, table tennis, badminton, weight training, martial arts and BoxFit. Students also have the chance to take part in sports trips, such as ice skating, rock climbing and Go Ape.

YOUNG ENTERPRISE

The College has been involved in the Young Enterprise competition since 2010, regularly reaching the London - and even national - finals! Young Enterprise provides a real and genuine opportunity for all students to set up their own business and run it for a year. Students get the opportunity to present their ideas at competitions in prestigious locations and participation is a valuable addition to a UCAS statement or CV.



STUDENT COUNCIL

The President and Vice President of the Student Council are elected by the students to represent their needs and interests and to contribute to the decision-making and governance of the College. Members of the Student Council serve on the governing body. The students are expected to initiate and take responsibility for many of their own activities – for example, the social programme and their contribution to the wider community through collections for charity or other awareness-raising events.

COLLEGE AMBASSADORS

Being a College Ambassador is an excellent way to enhance CVs and UCAS personal statements. Ambassadors provide support at open days and interview evenings, participate in photoshoots and even help create content for the College's social media!

STUDENT SUPPORT

FINANCIAL SUPPORT

Bursaries/free college meals will be available in 2026-27. These are subject to government funding and will be assessed on an income basis. There are no tuition fees chargeable to UK residents under 19 years of age on 31st August 2026. If you are a citizen of the European Union (EU) or European Economic Area (Iceland, Liechtenstein, Norway and Switzerland), you will need to prove your residency status by providing evidence of the EU Settlement Scheme (settled or pre-settled status).

ADDITIONAL LEARNING SUPPORT

If you have a learning difference such as dyslexia, autism spectrum condition or a disability, please be assured that you will receive tailor-made support from trained specialist tutors who receive continuous updates in their training. In addition to academic help, support takes the form of holistic development; the flourishing of the whole person with a key focus on developing self-esteem, confidence and independence. For more information see the Additional Learning Support page of our website.

COLLEGE COUNSELLOR

The College Counsellor offers a professional, confidential service to all students to help them deal with difficult feelings. You can self-refer or ask your tutor to refer you. The counsellor will offer you an initial appointment to discuss the issues affecting you and to decide with you whether or not counselling can help you. Counselling is not compulsory, so you can stop at any time.

STUDENT WELFARE*

At Saint Francis Xavier Catholic Sixth Form College we understand that your general wellbeing is central to your academic success. Whenever you need help or advice, there is someone to turn to. We offer a confidential, dedicated service to help manage your studies and deal with any issues, questions or concerns you might have, whether they are personal, financial or practical. Some of the issues we regularly help with include the following:

- Looked after children and care leaver advice and support
- Semi/independent living
- Homelessness
- Finance and funding
- Welfare benefits and counselling
- Health (physical and mental)



*The provision of this service is subject to the availability of the Student Welfare Officer. Named staff are available in the event of safeguarding issues.

PASTORAL SUPPORT

Every student will be allocated a tutor group and your tutor will be your biggest support in the years you spend at Saint Francis Xavier Catholic Sixth Form College. Each tutor group belongs to a House, headed by a member of staff who is there to offer further support and guidance. The College is proud of its pastoral care and support and the dedicated team will be on call to help when it is needed.

STUDENT SAFETY

The safety and welfare of all our students is of paramount importance here at Saint Francis Xavier Catholic Sixth Form College. The Designated Safeguarding Lead and safeguarding team are trained to detect and manage any issues that may arise. All members of staff and governors receive safeguarding training on a regular basis. College staff cooperate and engage with external agencies wherever necessary in accordance with legislation. Our safeguarding policies are comprehensive and available to view on our website. Through our tutorial programme and Religion and Philosophy lessons, we discuss safeguarding issues with our students to ensure that they are aware of how to keep themselves safe. This includes areas such as online safety and health. Policies and tutorials are continuously monitored and updated to address any emerging issues.

CAREERS GUIDANCE

At Saint Francis Xavier Catholic Sixth Form College, the Careers Education, Information, Advice and Guidance (CEIAG) Programme is central to each student's programme of study and progression throughout their college education.

The CEIAG Programme is integrated into students' weekly tutorial lesson, and is designed to match students' academic progression and enhance their career plans for the future.

THE CEIAG PROGRAMME ACTIVITIES INCLUDE:

- Structured careers lessons for all students
- Booked individual careers interviews (also open to parents)
- In-house and externally-organised events
- Careers workshops
- Job search and interview skills training

Students are encouraged to participate in university course taster sessions, summer schools and to go on university visits. The Careers Department builds partnerships with employers, training companies and universities to increase progression opportunities for our students.

WE WORK IN PARTNERSHIP WITH:

- University of Leicester
- Coventry University
- Coventry University London Campus
- UCL
- St Mary's University College
- University of Essex
- University of Roehampton
- The Brokerage City Link
- J P Morgan
- Investment 20/20
- Wisdom Tree
- HSBC
- Amazing Apprenticeships



HIGHER EDUCATION AND CAREERS FAIR

This very successful event held each year in March is an opportunity for our students to meet and interact with university staff, employers and training providers. At this event, students discuss university courses, apprenticeships and other training and employment opportunities with representatives from over 50 universities and employers.

THE ESSENTIAL 8

In response to the national skills strategy, the College also seeks to ensure that learners have the transferable skills necessary to thrive and progress in the ever-changing work landscape. To help achieve this ambition, the College has come up with the Saint Francis Xavier Essential 8, which are 8 core transferable skills employers are looking for. The Essential 8 are:

Communication

- Listening
- Speaking

Creative Problem Solving

- Problem Solving
- Creativity

Self-Management

- Staying Positive
- Aiming High

Collaboration

- Leadership
- Teamwork

Students will work on enhancing these skills not only during the curriculum but also during extra-curricular activities.

AIMING HIGH



At Saint Francis Xavier Catholic Sixth Form College we believe in supporting students to exceed their potential and achieve excellence. If your GCSE results suggest you have the capability to progress to highly selective universities, you can unlock your potential with our Aiming High programme, designed exclusively for high-achieving students at Saint Francis Xavier College.

The Aiming High programme is crafted to elevate your academic and personal profile, making you a standout candidate for prestigious universities and sought-after degree apprenticeships.

If you are a student who fulfils the criteria of an excellent GCSE score, you will be invited to join the Aiming High programme. If you choose to join the programme, you must maintain outstanding attendance, punctuality and academic excellence throughout the year to remain part of it.

If you choose to follow our Aiming High programme you'll benefit from:

- Participating in university-style taster sessions and lectures
- Receiving bespoke advice on university applications, including personal statement crafting and interview techniques
- Gaining access to esteemed university mentoring programmes that support your application process and give reduced offers
- Accessing recommended reading lists to delve into books, academic journals, and articles to broaden your knowledge and enhance critical thinking skills
- Experiencing university life first hand by attending summer schools at prestigious institutions
- Work experience, to gain practical insights and enhance your CV by undertaking placements in your field of interest

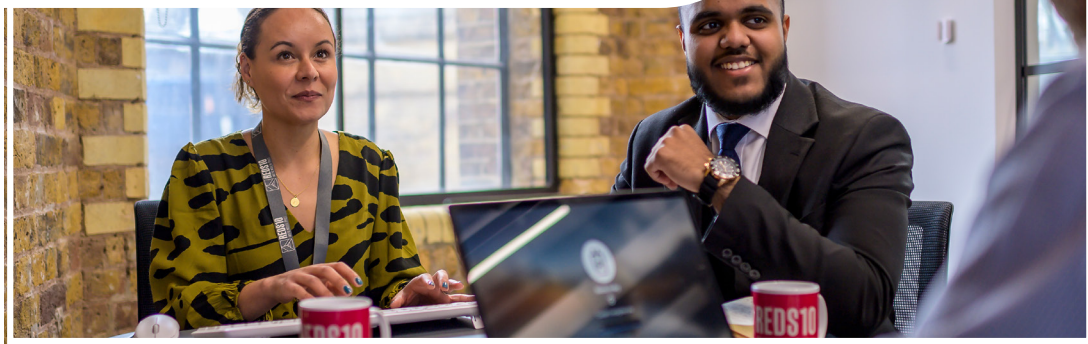
- Expanding your learning and boosting your academic profile through MOOCs (Massive Open Online Courses) offered by top universities and organizations worldwide
- Using a variety of online platforms to access subject tasters, courses, and lectures
- Supplementing your learning with diverse media formats, such as podcasts, audiobooks, TED Talks and documentaries
- Receiving specialised support to navigate the highly competitive application process for Medicine, Dentistry, and Veterinary Science
- Oxbridge: if you're interested in applying to Oxford or Cambridge, we have a range of support to help with the decision-making and application.

EXTENDED PROJECT QUALIFICATION (EPQ)

Students complete an independent research project on a topic of their choice. This qualification counts as half an A level and will develop your critical, reflective and problem-solving skills to help support your application to university. Many Russell Group universities consider this a valuable addition to a student's UCAS application and may even lower their grade requirements for course entry. See page 36 for more information.



INFORMATION FOR PARENTS & GUARDIANS



At Saint Francis Xavier Catholic Sixth Form College, students have all the support they require to help them reach their potential. We guide and help them to cope with their studies through our successful pastoral system and with access to specialised support through our counselling and welfare support services.

PASTORAL SUPPORT

The College is proud of its pastoral care and support system with a dedicated team on call to help when it is needed. Each student is part of a tutor group and will find that their personal tutor is their biggest support during their time with us.

ATTENDANCE AND PUNCTUALITY PROCEDURES

Our teachers lead by example by being punctual and prepared for lessons and ensuring that every lesson is a valuable experience with effective starter activities that are worth being punctual for. Teachers record attendance and punctuality accurately on the day of the lesson and follow up poor attendance and persistent lateness, involving parents and guardians when issues with attendance or lateness arise.

MONITORING AND ENCOURAGING STUDENT PROGRESS

Tutors will work with both the student and their parents/carers, to maintain achievement and overcome any difficulties which may arise during their studies by:

- Inviting parents/carers to attend progress review evenings twice a year with their son/daughter to meet with their subject teachers and tutor to hear about how they are doing in their studies.

- Providing each student with an Individual Learning Plan (ILP); an ongoing process of assessment, feedback, target-setting and review to support them in continually improving their performance in their courses
- Sending full reports to parents/carers at the end of both of the ILP periods, the Autumn and Spring terms.
- Building a positive ethos around learning, attendance, punctuality and behaviour.
- Supporting students who are having difficulty with learning, behaviour, attendance and punctuality through discussion and advice.

YEAR 12 HIGHER EDUCATION PARENT/CARER EVENING

The Careers Department organises an event aimed at all parents/carers of first year students, which is an opportunity to meet staff from several universities in our London partnership. Parents/carers will also be able to gain an insight into opportunities on offer in UK higher education institutions, and how to best prepare young people to take full advantage of their academic and career opportunities. The Careers Department are always on hand for any questions about a student's next step after sixth form.

FINANCIAL SUPPORT

Bursaries/free college meals will be available in 2026-27. These are subject to government funding and will be assessed on an income basis.

OVERSEAS STUDENTS

At Saint Francis Xavier Catholic Sixth Form College we pride ourselves on the inclusive nature of the College and value the diverse backgrounds of our students.

Your student journey will be enhanced by the numerous enrichment opportunities on offer and a network of friends will help you develop academically, socially and culturally. We value the development of all aspects of the student experience and you will enjoy a crosscultural learning environment that will help you achieve your academic goals, providing a strong foundation for the years ahead, either in university or the world of work.

HOW TO APPLY

Overseas students must apply using the online application form at www.sfx.ac.uk/apply. When entering your qualifications please select the most similar options at GCSE and, if invited to an interview, bring along details of the course(s) you are taking and your predicted grades. Please see page 22 for more information on how to apply.

FEES

There are no tuition fees chargeable to full-time students legally residing in England who are under 19 years of age on 1st September 2026.

FOREIGN QUALIFICATIONS

If you are successful in gaining a conditional offer and have foreign qualifications (excluding iGCSEs), you will need to provide a ENIC Statement of Comparability, which gives an official comparison of your qualifications to UK qualifications (such as GCSEs). Go to www.enic.org.uk to make an individual application. We will not be able to enrol you unless we have this information.



RESIDENCY

If you are not a British citizen, you will need to prove your residency status and entitlement to free 16-19 education. This means that during enrolment we must see the original of your passport and immigration status documents from the Home Office. If you are a citizen of the European Union (EU) or European Economic Area (Iceland, Liechtenstein, Norway and Switzerland), you will need to prove your residency status by providing evidence of the EU Settlement Scheme (settled or pre-settled status).

FLUENT SPEAKERS

Students fluent in French, Spanish, Portuguese or Italian will be eligible to take the language as an additional A level.

For further information, please email admissions@sfx.ac.uk

WORKING WITH SCHOOLS

Visiting Your School

POST 16 EVENTS

If you are holding a post 16 careers event for your year 10s or 11s, we would be delighted to attend and chat to your students about their options post-GCSEs. We are happy to focus on particular areas of the curriculum if required.

PARENTS' EVENINGS

Our admissions team are available to attend your parents' evenings to offer advice to parents and students.

APPLICATION WORKSHOPS

If you have a group of students interested in applying to Saint Francis Xavier Catholic Sixth Form College, our application and enrolment team can visit your school and guide students through the application process.

ASSEMBLIES

Our staff and students are available throughout the year to speak at your year group assemblies. The talks can consist of a presentation about Saint Francis Xavier Catholic Sixth Form College and an inspirational talk from our student ambassadors, or be adapted to cover a specific topic, such as the benefits of BTECs and T Levels, or the importance of achieving at least five good GCSE passes.

Visiting Saint Francis Xavier Catholic Sixth Form College

TASTER DAYS

We hold special school taster days for groups of year 10 or 11 students, featuring taster lessons and a tour of the College, along with informal staff and student presentations. These are a great way for your students to prepare for their next step after school and have a taste of life in a sixth form college.

GROUP TOURS

We can offer tours of the College to student groups. If students are interested in a particular subject, we can arrange for a Q&A session.

CAREER ADVISOR SESSION

We are always happy to meet with school careers advisors to discuss the courses we offer or to go over our application process. We can come to you or you can come to us!



OPEN DAYS 2025-2026

Please get in touch if you would like to bring along a group of students to any of our open events and we will make special arrangements for you:

OPEN DAY

Saturday 18th October 2025
10am - 2.30pm

SPRING OPEN AFTERNOON FAIR

Wednesday 4th March 2026
4pm - 6pm

SUMMER OPEN AFTERNOON FAIR

Wednesday 24th June 2026
2pm - 4pm

All our open events can be registered for on the College website or you can simply attend on the day.

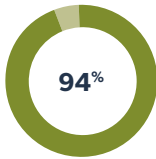
Bespoke open mornings can be arranged for school groups.



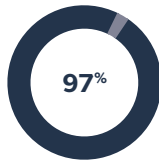
To book any of the services we offer, contact admissions@sfx.ac.uk

RESULTS 2025

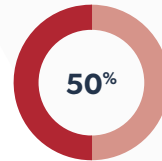
94% of our 400+ UCAS applicants progressed to university – far higher than most colleges



Our Level 3 pass rate was 97%



50% of passes were high grades



In 2025, we saw our highest ever number of students progressing to one of the Top 50 UK universities, including members of the prestigious Russell Group:

- Durham University
- King's College London
- University of Warwick
- University of Southampton
- University of Leeds
- Royal Central School of Speech and Drama
- University of York
- Queen Mary University of London
- University of Birmingham
- University of Liverpool
- University of Manchester
- University of Nottingham
- University of Sheffield
- University of Surrey
- SOAS University of London

31 courses had a 100% pass rate

18 A level courses achieved 100% pass rate

9 BTEC/UAL Extended Level 3 Diplomas had 100% pass rate

100% pass rate on all Level 1 and 2 courses

RHIAN | OVERSEAS STUDENT

- Applied Science BTEC Level 3 Extended Diploma – D*, D*, D*, EPQ – A*
- What next? – Gap year, then science degree at University of Surrey
- *"I learnt a lot on my course and studying the EPQ gave me the opportunity to stretch myself – as well as gain more UCAS points. I really enjoyed all the enrichment activities too. I played badminton every week and helped out at lots of events as a Student Ambassador."*

JORDAN | OVERSEAS STUDENT

- Maths, Further Maths, Physics A levels – A, A, B
- What next? – General Engineering, University of Sheffield
- *"I received helpful support from my teachers throughout my course and they helped motivate me to keep on working hard. I made lots of friends too and I enjoyed all the sports activities – especially basketball!"*

AZURI | RICHMOND PARK ACADEMY

- Sports and Exercise Science BTEC Level 3 Extended Diploma – D*, D*, D*
- What next? – Sports Science, University of Birmingham
- *"My teachers encouraged me to work hard from the very start, which ensured I kept on top of my assignments. SFX treats you like an adult and I had more freedom and flexibility than at school, which has helped prepare me for university."*

SARAI | SEDGEHILL ACADEMY

- Economics, Sociology, Business A levels – A, A, A
- What next? – An accounting degree apprenticeship
- *"I learnt a lot about taking responsibility and managing my workload at SFX. The teachers were extremely helpful and played a big contribution to my success. The careers team have been very supportive in helping my apprenticeships applications."*

ANTHEA | SHIRLEY HIGH SCHOOL

- Italian, French, Criminology A levels – A*, B, B, EPQ – B
- What next? – Degree apprenticeship, Metropolitan Police
- *"I was given encouragement to start revising in year 12 and the teachers made sure I kept this up. I made lots of new friends through the Student Ambassadors programme and I was elected as Student President in year 13"*

CHEVENAE | HARRIS ACADEMY, BATTERSEA

- Applied Science BTEC Level 3 Extended Diploma – D*, D*, D
- What next? – Biomedical Science, University of Surrey
- *"The teachers worked hard to make sure I achieved the best possible results. They helped me meet all my deadlines and get support when I needed. The SFX community is great too! Everyone is really friendly and I felt welcome from my first day."*

HIGHLIGHTS FROM 2024-25



RESULTS SUCCESSES

We had fantastic results in 2024-25. Our Level 3 pass rate was over 97%, with 50% high grades. In total an impressive 42 courses had a 100% pass rate and 175 students achieved the equivalent of BBB or above.



THEATRE AND MUSEUM VISITS

As part of their studies and enrichment, SFX students regularly go on trips, experiencing everything from major West End shows to experimental fringe productions. Other places students have visited this year include the British Museum, the Globe Theatre, the Royal Academy of Arts, the National Archives, Tate Modern and Wembley Stadium.



YOUNG ENTERPRISE LONDON AND ESSEX WINNERS

Continuing our success in the national Young Enterprise competition, in 2025 our budding entrepreneurs beat tough opposition to win the London and Essex final with their innovative jar opening tool Jar Jaws!



SFX IS 40!

In July we celebrated 40 years since SFX became the first inner London sixth form college in 1985. We are proud to have grown into one of London's top-performing colleges, with a legacy of academic excellence, inclusion, ambition and community. Here's to the next 40 years of inspiring futures and transforming lives.



FOOTBALL ACADEMY CHAMPIONS

The SFX Football Academy is one of the most successful and fastest-growing college football academies in London, offering professional coaching alongside students' courses. This year, our girls' team won the London Association of Colleges league title!



STUDENT AMBASSADORS

All students are invited to become College Ambassadors and support with open days and interview evenings. It's a great way to meet new people and develop teamwork skills, as well as being an excellent addition to a CV or UCAS personal statement. We even hold an awards ceremony for the top ambassadors!



CRICKET ACADEMY

Our Cricket Academy in partnership with Surrey County Cricket Club is going from strength to strength and this year, our first XI made it to the final of the Douggray London Cup! Cricket Academy students receive high-quality coaching and training alongside their studies, as well as opportunities to find out about careers in the cricket industry.



PERFORMING ARTS

Our UAL Performing and Production Arts students put on some fantastic shows throughout the year, including Shakespeare Reimagined, Dear Evan Hansen and the stunning Christmas production Sparkle!



CULTURE DAY

We're lucky to have students and staff from all over the world and on Culture Day we celebrated all those nationalities with outfits, music and delicious food from across the globe.



VISITING SPEAKERS

Industry experts are regularly invited into College to give students career advice and guidance. This year, speakers included HSBC, Schrodgers, Friends of the Earth, Investment 2020, Eversheds Sutherland, DWP and Marsha De Cordova, MP for Battersea.



UNIVERSITIES AND EMPLOYERS

Alongside their studies, students visited universities and employers to guide them in their next steps. This year's trips included visits to the University of Cambridge, British Airways, Birmingham University, JP Morgan, Queen Mary University of London, UCL and the University of Oxford.



HIGHER EDUCATION AND CAREERS FAIR

Our students are in demand from universities across the UK, and we held our largest ever Higher Education Fair this year. Over 50 universities and companies who were keen to work with our students packed out the sports hall for a full day of networking and information.

SPORTS SUCCESS AT SFX

Sports enrichment is a big part of life at SFX. Alongside the daily drop-in activities for all students, we have boys' and girls' teams in football, basketball and netball who play in college leagues. Our netball team were particularly happy after one convincing result!



COURSE OPTIONS EXPLAINED

A LEVELS

*This is a
2 YEAR
full-time
course*

ENTRY REQUIREMENTS

6 GCSEs Grade 4 or above, preferably including Maths and English Language (See entry requirement pages at the back of the prospectus for course-specific entry)

FINAL GRADES BASED MAINLY ON EXAMS
completed at the end of the 2 year course

*Students typically take **3 A LEVEL SUBJECTS** (they can be considered for 4 A levels if their GCSE results meet entry requirements)*

*Chosen A level subjects do not have to be related, but certain combinations will **COMPLEMENT EACH OTHER***

*Some university courses will ask for **SPECIFIC A LEVEL SUBJECTS***

THE MAJORITY OF STUDENTS FOLLOWING AN A LEVEL PROGRAMME PROGRESS TO UNIVERSITY.
A small minority of students seek employment on completion of their course



BTEC/UAL LEVEL 3 EXTENDED DIPLOMA

*This is a
2 YEAR
full-time
course*

ENTRY REQUIREMENTS

5 GCSEs at Grade 4 or above / BTEC Level 2 Diploma Merit or above (See entry requirement pages at the back of the prospectus for course-specific entry)

FINAL GRADES ARE BASED ON A COMBINATION OF COURSEWORK AND EXAMS
submitted throughout the 2 year course

*Students typically take **ONE EXTENDED DIPLOMA SUBJECT***

AN EXTENDED DIPLOMA COURSE IS EQUAL TO 3 A LEVELS in terms of UCAS points; a triple distinction (DDD) is equal to AAA at A level when converted to UCAS points

BTEC COURSES WILL OFTEN INCLUDE A WORK PLACEMENT as part of the course

THE MAJORITY OF STUDENTS PROGRESS TO UNIVERSITY OR DEGREE APPRENTICESHIPS to study their subject at degree level. Some students seek employment on completion of the qualification. These courses develop a wide range of skills and aptitudes which are valued by employers



MATHS AND ENGLISH GCSE RETAKES

All students who have yet to achieve a Grade 4 in Maths and/or English Language will be expected to study the relevant GCSE(s) as part of their programme.

*Maths and English Language GCSEs are taught over **ONE YEAR** and are offered as an **ADDITION TO YOUR MAIN COURSE OF STUDY.***



T LEVELS

This is a **2 YEAR** full-time course

ENTRY REQUIREMENTS:

5 GCSEs at grade 4 or above (see entry requirement pages at the back of the prospectus for course specific entry)

Students study **ONE T LEVEL**

T LEVELS COMBINE ACADEMIC WORK WITH AN INDUSTRY PLACEMENT OF AT LEAST 315 HOURS

Final grades are **BASED ON A COMBINATION OF EXAMS, AN EMPLOYER-SET PROJECT AND COURSEWORK/ASSESSMENTS**

A T Level is **EQUIVALENT TO 3 A LEVELS/1 BTEC EXTENDED DIPLOMA**

STUDENTS CAN PROGRESS ONTO EMPLOYMENT, APPRENTICESHIPS OR HIGHER EDUCATION

BTEC LEVEL 2 DIPLOMAS

1 YEAR full-time course

ENTRY REQUIREMENTS 4 GCSEs at Grade 3 or above/pass in Foundation Learning

EQUIVALENT to 3/4 GCSEs

CAN BE TAKEN ALONGSIDE English and/or Maths GCSE retakes

Final grade based on **COURSEWORK AND SET TASKS COMPLETED** throughout the year course and some externally assessed exams

CAN PROGRESS TO LEVEL 3 if an overall Merit or above is achieved

FOUNDATION LEARNING

1 YEAR full-time course

ENTRY REQUIREMENTS interest in subject areas and willingness to work hard

EQUIVALENT to 4 GCSEs Grades 3-1

Progress will be **CONTINUALLY ASSESSED THROUGHOUT THE ACADEMIC YEAR** using a credits system; on completion of the course the student will be graded on the basis of their coursework

CAN PROGRESS TO LEVEL 2 once successfully completed

BTEC and CTEC Nationals (2026) potential reform

The post-16 Level 3 vocational qualifications are currently undergoing some reform. The government is undertaking a review that may impact Level 3 BTEC Nationals, Cambridge Technicals and other Level 3 vocational qualifications in England.

This means that from September 2026 we may be able to offer some BTEC Extended Certificate Qualifications in place of the BTEC Extended Diplomas, however this is subject to government approval. These qualifications are the equivalent of one A level in size and will be studied alongside two other A level subjects. It may also be possible to study two BTEC Extended Certificates alongside one A level.

The subjects that we will be looking to offer as Extended Certificates from September 2026 are:

- Applied Science
- Health and Social Care
- Engineering
- Information Technology

As with our current BTEC Extended Diplomas these are assessed via a mixture of coursework and exams and help equip students with the applied knowledge, skills and personal attributes they need to enter and thrive at university or meet the demands of future employment.

We will keep our website updated with future changes as the government announces them. You can also discuss this with us at your interview.

APPLYING TO SAINT FRANCIS XAVIER CATHOLIC SIXTH FORM COLLEGE

1.

Go to
www.sfx.ac.uk/apply



2.

Complete and submit
the online application



3.

Attend an interview
at College



4.

Receive your offer
of a place!



THINGS TO REMEMBER:

1. We will need to see a reference from your school or college before we can make you a conditional offer. We will email your referee following the submission of your application to request a reference for you.
2. You will need to maintain a good school/college reference in order to hold your conditional offer.
3. Any offer we make will be for a place at the College rather than for specific course(s) – your course(s) will be confirmed at enrolment after you have received your GCSE results and met the entry requirements (see entry requirements at the back of the prospectus).

ENROLMENT

Enrolment for new students will be during the last week of August 2026 after GCSE results day. After receiving your conditional offer, you will be given a specific time and date to enrol during enrolment week.

OPEN DAYS 2025-2026

Take a tour of the College, hear from the Principal, speak to our students and teachers and complete an application at one of our Open Days.

OPEN DAY

Saturday 18th October 2025
10am - 2.30pm

SPRING OPEN AFTERNOON FAIR

Wednesday 4th March 2026
4pm - 6pm

SUMMER OPEN AFTERNOON FAIR

Wednesday 24th June 2026
2pm - 4pm

Please visit www.sfx.ac.uk/events for more information and to register your place!





A Levels & Applied Qualifications

ART & DESIGN – FINE ART

A level - EDUQAS (WJEC)

For more information, please visit: www.sfx.ac.uk/fineart



COURSE DESCRIPTION

Do you love working with a broad range of artistic media? Do you explore cultural, social and political issues with your art?

Then you'll enjoy Fine Art A level. It fosters creative problem solving, independence, innovation and risk taking as well as engagement with cultural, social and political issues. As you explore the world of art and design, you'll experiment with and learn through the creative visual process. You can expect to work with a wide range of media: traditional techniques such as drawing; painting; printmaking and sculpture. We support learners to become highly independent, creative and self-motivated individuals.

In Year 1, your focus will be on becoming visually literate and articulate - exploring ideas, developing skills through the creative process, and learning from creative exploration. You'll develop mastery of practical skills, and creative and visual learning.

You will also make contextual links between your own work and that of other artists and designers through research assignments and an extended essay.

Assessment:

Two coursework projects: the Personal Investigation (60%) and the Externally Set Assignment (40%).

Unit 1: Personal Investigation Portfolio (a coursework unit), 60% of overall mark. It includes a 1000-3000 word assignment.

Unit 2: Externally Set Assignment, 40% of overall mark. The project approach assignment is studied between February and May, and includes a 15-hour exam.

WHERE THIS COURSE COULD TAKE YOU

Progression to university from A level Fine Art is high. Students who want to specialise in art and design typically progress on to a Foundation Diploma in Art & Design at University of the Arts London (UAL) institutions, Goldsmiths University, or other universities across the country.

Career opportunities include architecture, interior design, product design, illustration, textile design, set design, fashion design and many others.

WHAT OUR STUDENTS SAY

"In Fine Art A level we have freedom to choose the sort of work that we make in each project."

COURSE HIGHLIGHTS

- We visit a range of exhibitions and workshops throughout the course where you'll have the opportunity to visually explore, challenge and develop your own ideas and opinions on significant themes and issues.
- Drawing trips to London galleries have previously included: The National Portrait Gallery, The Victoria and Albert Museum and the Tate Museums.

ART & DESIGN – GRAPHIC COMMUNICATION

A level - EDUQAS (WJEC)

For more information, please visit: www.sfx.ac.uk/graphiccommunication



COURSE DESCRIPTION

Do you want to explore traditional as well as digital formats? Are you an innovative, independent, risk-taking problem solver?

You'll love the Graphic Communication A level that fosters creative problem solving and engagement with cultural, social and political issues. Your work will explore traditional as well as digital technologies, growing your knowledge and skills in illustration, branding, identity, advertising, motion graphics, and interaction/UX design.

You'll develop creative thinking skills and idealised communication solutions, while having the opportunity visually to explore, challenge and develop your own ideas and opinions about significant themes and issues.

You will make contextual links between your own work and that of other artists and designers through research assignments and an extended essay.

Assessment:

Two coursework projects: the Personal Investigation Portfolio (60%) and the Externally Set Assignment (40%).

Unit 1: Personal Investigation Portfolio (a coursework unit), 60% of overall mark. It includes a 1000-3000 word assignment.

Unit 2: Externally Set Assignment, 40% of overall mark. The project approach assignment is studied between February and May, and includes a 15 hour exam.

WHERE THIS COURSE COULD TAKE YOU

Progression to university from this course is high; students who want to advance into art and design typically progress through a Foundation Diploma in Art & Design and then onto undergraduate courses.

Many students go on to study at the University of the Arts London (UAL) colleges; Ravensbourne College of Design; Manchester Metropolitan University, and De Montford University.

Career opportunities include animation, video game design, graphic design, illustration creative director, set design, special effects artist, photography, product management, interaction design, industrial design, editorial design and architecture.

WHAT OUR STUDENTS SAY

"It's fun, I enjoy the coursework and you get to try out different materials and ways of creating things"

"I'm excited that my graphic design A level could lead to lots of different careers"

COURSE HIGHLIGHTS

- Collaboration with galleries and other art institutions. These have included 'Access Art 25' with live interpretation with Antony Gormley at the Royal Academy
- Visits to the Public Health Poster Collection at the Wellcome Collection, Euston
- The Illustration 'Pick Me Up' Fair at Somerset House and the ICA

ART & DESIGN – PHOTOGRAPHY

A level - EDUQAS (WJEC)

For more information, please visit: www.sfx.ac.uk/photography



COURSE DESCRIPTION

Are you inquisitive, open-minded and independent in your approach to photography? Want to explore the way you see the world through your own lens?

If so, this challenging and inspiring course that approaches photography as an artistic discipline is for you. You'll experiment with photographic concepts and practices, using a range of lens-based techniques and processes, to engage critically with the practice and purposes of photography. We encourage all our Photography students to be inquisitive, open-minded and independent in their approach to the subject.

At Saint Francis Xavier we teach this course using DSLR cameras. Students may use the Art Department's set of Nikon DSLR cameras, so you are not required to have your own, although we recommend that you do have your own camera if you can. Our projects and workshops give you opportunities to learn all about still and moving photography, camera-less photography, digital editing, lighting techniques, mixed-media experimentation, and installation.

Assessment:

Two coursework projects: the Personal Investigation Portfolio (60%) and the Externally Set Assignment (40%).

Unit 1: Personal Investigation Portfolio (a coursework unit), 60% of overall mark. It includes a 1000-3000 word assignment.

Unit 2: Externally Set Assignment, 40% of overall mark. The project approach assignment is studied between February and May, and includes a 15 hour exam.

WHERE THIS COURSE COULD TAKE YOU

Photography students typically progress onto a wide variety of university degree courses in art and design, film and media subjects such as fine art photography, film and television, fashion, animation, advertising, commercial photography, media and communication, visual communication, professional photography, photography and digital imaging, and creative media production.

WHAT OUR STUDENTS SAY

"Photography has really helped me to develop my creative side"

"You are able to research topics that you are really interested in and develop work around that."

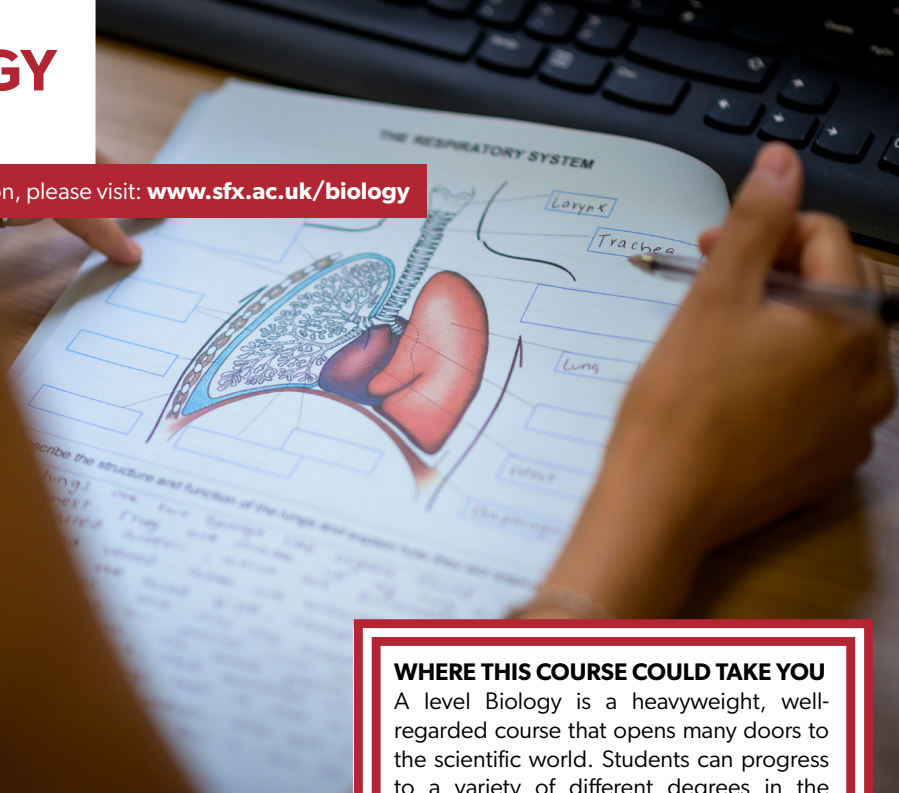
COURSE HIGHLIGHTS

- Class-based activities
- Visits to exhibitions at The Photographers' Gallery, The Centre for British Photography, and the Tate Galleries, where students can consider their own work in the context of professional photographers', artists' and designers' practices.

BIOLOGY

A level (OCR)

For more information, please visit: www.sfx.ac.uk/biology



COURSE DESCRIPTION

Do you love seeing the natural world - from the microscopic to the macroscopic? Do cells interest you as much as the organisms they make up?

Then Biology is the perfect A level for you. Biology is the study of the natural world and will take you on a journey through life, from the macroscopic environments and organisms that drive the biodiversity we see on Earth to the microscopic world of the cell and molecular interactions.

The OCR A level Biology specification is a demanding one, with a wide breadth of content, data analysis and mathematical skills forming major parts of the course.

Units:

- Module 1: Development of practical skills in biology
- Module 2: Foundations in biology
- Module 3: Exchange and transport
- Module 4: Biodiversity, evolution and disease
- Module 5: Communication, homeostasis and energy
- Module 6: Genetics, evolution and ecosystems

Assessment:

Three written exams at the end of Year 2, and the independently assessed practical endorsement.

WHERE THIS COURSE COULD TAKE YOU

A level Biology is a heavyweight, well-regarded course that opens many doors to the scientific world. Students can progress to a variety of different degrees in the biological sciences, environmental and medical fields including medicine, dentistry, veterinary medicine, physiotherapy, paramedic science, nursing, biomedical science, genetics and biochemistry. As a facilitating subject, Biology can also lead to other numerate degrees like business studies and finance.

Possible careers include research scientist, science communication, clinical scientist, environmental scientist as well as the education sector. Often A level Chemistry is required alongside Biology for these degrees and career options.

COURSE HIGHLIGHTS

- Trips to:
 - Kew Gardens
 - The Royal Society Exhibition
 - Tooting Blood Bank
 - Universities
- Support and workshops for students applying for medicine, dentistry and veterinary medicine
- Opportunities and support with summer schools and work experience

BUSINESS

A level (PEARSON EDEXCEL)

For more information, please visit: www.sfx.ac.uk/business



COURSE DESCRIPTION

Do you feel you might have what it takes to be an entrepreneur? Do you want to learn how business makes the commercial world go around?

Then our Business A level is just what you need. It provides students with a broad and meaningful understanding of how businesses operate, develop and expand in the modern and ever-changing world.

In Theme 1 you will learn about dynamic markets, social media and online retailing, innovation and entrepreneurship. Then Theme 2 introduces you to business finance, the impact of economic uncertainty on businesses and the competitive environment.

In the second year, for Theme 3 you will move from functions to strategy, exploring business decision-making, small business survival, managing change and scenario planning, and finally Theme 4 explores global business; investigating overseas markets, cultural and social differences and the impact of multinational corporations.

Units:

YEAR 1

Theme 1: Marketing and People

Theme 2: Managing Business Activities

YEAR 2

Theme 3: Business Decisions and Strategies

Theme 4: Global Business

WHERE THIS COURSE COULD TAKE YOU

Business Studies A level is an outstanding preparation for a business-related degree, with its elements of accountancy, economics, marketing and management. It gives you insight into entrepreneurship and how to establish a career in business.

It's also a useful introduction to the world of business for students planning to enter professions such as banking, accountancy, management services and human resources management. It's equally beneficial for students progressing to higher education in other fields.

Assessment:

YEAR 1: Two internal exams covering Themes 1 and 2

YEAR 2: Three external exams covering content from Themes 1 to 4

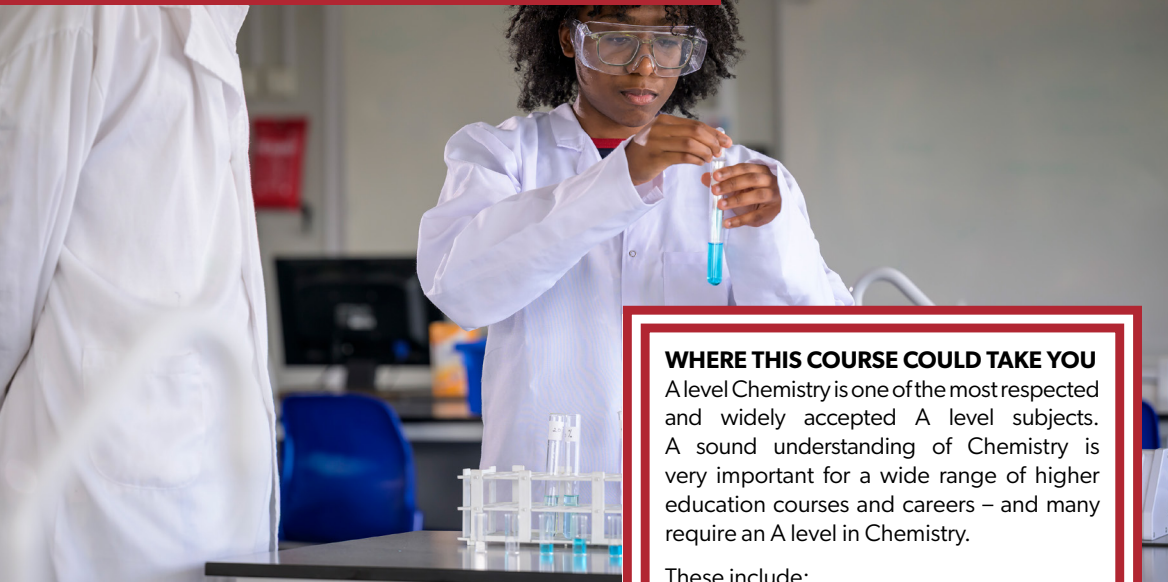
COURSE HIGHLIGHTS

- Opportunity to attend a revision conference
- Outstanding preparation for a business related degree with elements of accountancy, economics, marketing and management
- Insight into entrepreneurship and establishing a career in business

CHEMISTRY

A level (AQA)

For more information, please visit: www.sfx.ac.uk/chemistry



COURSE DESCRIPTION

Are you interested in understanding the elementary building blocks of our world? Do you want to solve problems and think critically?

Then A level Chemistry is the challenge you're looking for. Chemistry is the study of the substances that make up matter; the investigation of their properties and reactions, and how to use those reactions to create new substances.

The curriculum will pique your curiosity and develop investigative skills that will lead to a deep knowledge of the fundamental aspects of Chemistry. The elementary building blocks of life begin with Chemistry, and you'll learn how they are everywhere; in the air we breathe, in food, and in medicine. It's Chemistry that makes up our environment and will determine the future of our planet.

We strongly recommend that you study Chemistry with another science, and/or Maths.

COURSE HIGHLIGHTS

- Visit to Kingston University for a Chemistry subject insight day, including practical sessions in the undergraduate laboratories
- Trip to the Royal Society Summer Exhibition
- Opportunities to talk to scientists working in STEM careers
- Opportunities to take part in prestigious competitive events, including the Cambridge Chemistry Challenge and the Chemistry Olympiad

WHERE THIS COURSE COULD TAKE YOU

A level Chemistry is one of the most respected and widely accepted A level subjects. A sound understanding of Chemistry is very important for a wide range of higher education courses and careers – and many require an A level in Chemistry.

These include:

- Physical sciences (engineering, environmental science)
- Biological sciences (biochemistry, medicine, veterinary science and other areas of healthcare)
- Related scientific areas (such as forensic science and chemical research)

As the study of Chemistry helps to develop critical thinking and problem-solving skills, it is also a facilitating subject for other areas such as law, education and journalism.

Units:

YEAR 1

Atomic Structure and Moles, Structure and Bonding Acids, Bases and Group 2, Hydrocarbons, Energetics, Redox Reactions and Group 7, Rates and Equilibrium, Further Organic Chemistry

YEAR 2

Further Organic Chemistry 1 (Aldehydes and Ketones, Aromatic Chemistry, Carboxylic Acids and Their Derivatives), Further Physical Chemistry 1 (Kinetics, Equilibria, Acids, Bases and Buffers), Further Organic Chemistry 2 (Amines, Polymers, Biochemistry, NMR), Further Physical Chemistry 2 (Thermodynamics, Electrochemistry), Further Inorganic Chemistry (Period 3, Transition Elements).

Assessment:

Three two-hour exam papers at the end of the second year. Independent assessment of 12 required practicals across both years.

CLASSICAL CIVILISATION

A level (OCR)

For more information, please visit: www.sfx.ac.uk/classical



COURSE DESCRIPTION

Through The World of the Hero, students will study some of the greatest pieces of literature produced in the Ancient World: 'The Odyssey' and 'The Aeneid'.

Both texts will be explored for attitudes and values of the time and to interpret what it meant to be a hero in the Classical World. The Greek Theatre unit allows students to explore the background of Western theatrical performance through art and architecture, and to engage with ancient Greek comedy and tragedy, both of which pose questions relevant to society today.

The Beliefs and Ideas unit looks at Greek Religion, which is so unlike modern religion. It allows us to understand how much our Western world has changed, from a world with many gods and a multitude of divine beings. Yet, by studying ancient mystery cults, oracles and philosophical interpretations of the divine, you will learn how many of our worries and ideas of the divine have in fact not changed all that much.

N.B. Those considering the subject do not need to have studied it beforehand. No prior knowledge is expected.

Units:

YEAR 1: The World of the Hero: Homer's 'The Odyssey'

Culture and Arts: Greek Theatre

YEAR 2: The World of the Hero: Virgil's 'The Aeneid'

Beliefs and Ideas: Greek Religion

WHERE THIS COURSE COULD TAKE YOU

Classical Civilisation complements English Literature, History, Politics, Performance Studies, Religion and Philosophy and Art. It is beneficial for careers which involve research, analysing and evaluating evidence and information, textual analysis, developing arguments and being able to spot weaknesses in assertions and independent thinking skills. Students with Classical Civilisation A level often progress to careers in law, politics, the Civil Service, teaching, public relations and many more areas. The subject is highly regarded by universities and employers.

Assessment:

Assessment is 100% examination based.

COURSE HIGHLIGHTS

- Trips to universities to access talks by experts in the field.
- Theatre trips to see Greek plays, which are still performed in London's West End and elsewhere.
- Museum visits.
- A residential trip to Sicily.

WHAT OUR STUDENTS SAY

"I had help from the teachers whenever I needed it"

CRIMINOLOGY

Level 3 Applied Diploma (WJEC)

For more information, please visit: www.sfx.ac.uk/criminology



COURSE DESCRIPTION

*How do we decide what behaviour is criminal?
How do we explain why people commit crime?*

Knowing about the different types of crime and the criminological approaches to theory will give you a sharper insight into the kind of thinking used by experts and politicians to explain crime and criminality. Among other challenging questions, you'll think about the techniques that can be used to investigate different crimes, and what might be the most effect forms of punishment.

The Level 3 Applied Diploma in Criminology is a qualification with elements of psychology, law and sociology that complements studies in other humanities subjects. You'll learn using authentic criminal case studies.

Units:

Unit 1: Changing awareness of crime

Unit 2: Criminological theories

Unit 3: Crime scene to courtroom

Unit 4: Crime and Punishment

Assessment:

50% coursework, 50% examination

WHERE THIS COURSE COULD TAKE YOU

This course can lead to careers in policing, social care, probation services, prison services, law and further education in any humanity subject.

WHAT OUR STUDENTS SAY

"I love Criminology lessons and learning about real life criminal cases!"

"My two teachers for Criminology were amazing and helped me so much!"

COURSE HIGHLIGHTS

- Visit to the University of Law
- Visit to The Courts of Justice
- Talks from specialist policing forces

ECONOMICS

A level (PEARSON EDEXCEL)

For more information, please visit: www.sfx.ac.uk/economics



COURSE DESCRIPTION

What do possible post-Brexit trade agreements mean for individuals and the economy? How do we solve the problem of increasing inequality in the UK?

If you love considering big questions like these, as well as: does Africa have the potential of becoming the most powerful continent? Should the Bank of England cut or raise interest rates? Economics is the A level for you.

Economics is an engaging, challenging and progressive subject. It will help you to answer some of the questions above. The course aims to bring the economy to life and allow you to develop a thorough comprehension of how the UK and global economies operate, enabling you to analyse how current economic issues and problems affect our daily lives.

Units:

Theme 1: Introduction to Markets and Market Failure

Theme 2: The UK Economy - Performance and Policies

Theme 3: Business Behaviour and the Labour Market

Theme 4: Global Perspective

Assessment:

100% exam - three exams at the end of year 13

WHERE THIS COURSE COULD TAKE YOU

Economics is a very well-respected subject and can provide you with the skills that are useful for a wide variety of careers. Economics, business, banking, accounting, finance, law and politics are just a few areas that appreciate an understanding of economic policies, problems and issues.

The majority of students who study A level Economics go on to study economics, or a related subject at a higher level.

COURSE HIGHLIGHTS

- Lectures at economic institutions, such as the Institute of Economic Affairs and Bank of England
- Bank of England workshop
- KMPG Employability Workshop
- PwC Apprenticeship Workshop
- World Bank Workshop

ENGLISH LANGUAGE AND LITERATURE

A level (AQA)

For more information, please visit: www.sfx.ac.uk/englanglit



COURSE DESCRIPTION

Are you captivated by the beauty of literature and intrigued by the complexities of language? Are you excited about the prospect of honing your skills in both critical analysis and creative expression?

If so, our A level English Language and Literature offers you the chance to study a wide range of texts, both literature and journalism, and produce creative writing. You'll read and analyse literary, non-literary and spoken language texts whilst learning to produce writing of a particular style, voice and register. You'll examine all three genres (prose, poetry and drama) to consider variations and connections between texts in different forms. Works studied include *The Handmaid's Tale* and *A Streetcar Named Desire*.

Units:

Unit 01: Telling Stories

Unit 02: Exploring Conflict

Unit 03: Making Connections

Assessment:

Two exams and a coursework folder of investigative and analytical work.

COURSE HIGHLIGHTS

- Day trip to Paris to explore the culture of the city and its influence on the anthology texts.

WHERE THIS COURSE COULD TAKE YOU

A level English courses are excellent preparation for any one of the wide variety of English courses available in higher education. English Literature particularly is considered a desirable subject by Russell Group universities. English is useful for career paths including journalism, law, publishing, the Civil Service, politics and teaching.

WHAT OUR STUDENTS SAY

"I really enjoy the debates and discussions we have to help us develop our opinions."

ENGLISH LITERATURE

A level (OCR)

For more information, please visit: www.sfx.ac.uk/englit



COURSE DESCRIPTION

Do you love reading? Are you excited about exploring a variety of literary texts – poetry, drama and prose?

If so, our A level English Literature offers you the chance to analyse, compare and understand a variety of literary texts from all genres: poetry, drama and prose. You'll find a wide range of literary eras represented on the course, which focuses on a balance of modern and classic texts.

You'll study canonical works such as *Hamlet* and *A Doll's House* along with lesser-known texts from Black British and American writers.

Units:

Unit 01: Drama and Poetry pre-1900

Unit 02: Comparative and Contextual Study

Unit 03: Literature Post-1900

Assessment:

Two exams and a coursework folder of investigative and analytical work.

COURSE HIGHLIGHTS

- Frequent theatre trips to see modern productions of set texts and an A Level Study Day at The Globe Theatre as well as in-college workshops with visiting poets and novelists.

WHERE THIS COURSE COULD TAKE YOU

A level English courses are excellent preparation for any one of the wide variety of English courses available in higher education. English Literature, in particular is considered a 'facilitating subject' by Russell Group universities. English is useful for career paths including journalism, law, publishing, the Civil Service, politics and teaching.

WHAT OUR STUDENTS SAY

"I really enjoy the debates and discussions and the help with structuring an essay"

ENVIRONMENTAL SCIENCE

A level (AQA)

For more information, please visit: www.sfx.ac.uk



COURSE DESCRIPTION

A level Environmental Science is a new and exciting course that provides an opportunity to take a multidisciplinary subject containing Physics, Chemistry and Biology elements.

Environmental Science is ideal if you are a student who has strengths in all three of these subjects, and are passionate about the environment, wildlife, sustainability and how to solve current environmental issues. This course builds on the environmental science and ecology knowledge that you will have acquired during GCSE Science.

This course would make an excellent combination with the sciences, humanities, Geography, Maths, and Law.

Units:

Module 1: The living environment

Module 2: The physical environment

Module 3: Energy resources

Module 4: Pollution

Module 5: Biological resources

Module 6: Sustainability

Module 7: Research methods

Assessment:

100% exam assessment. 2x 3-hour exam papers: a mixture of multiple choice, short answer and extended writing questions.

Practical skills are covered throughout the course through field work and lab-based practicals.

WHERE THIS COURSE COULD TAKE YOU

You can go on to further education related to this course, including bachelor's degrees in environmental science, microbiology, ecology, conservation, marine biology, environmental law, Earth sciences and geography.

Apprenticeships include training as an environmental practitioner.

Careers related to this course include: ecologist, wildlife conservation, local government roles, town planning and transport design, renewable energy, and various roles in the conservation and environmental sector.

COURSE HIGHLIGHTS

- This is a new course and an exciting opportunity for prospective students
- Day field trips to wildlife reserves and sustainable organisations
- A 2 to 4-day residential course
- At least 12 practical opportunities, including conducting your own research

EXTENDED PROJECT QUALIFICATION (EPQ)

(PEARSON EDEXCEL)

For more information, please visit: www.sfx.ac.uk/epq



COURSE DESCRIPTION

Do you have a topic you're passionate about? Would you like to research it in depth, create a piece of work and present it to your teachers and peers?

We offer the EPQ in addition to a three A level or a Level 3 Extended Diploma programme. The EPQ gives you the opportunity to select a topic that you are particularly interested in, and conduct both primary and secondary research. You can carry it out individually or as a group and it can be practical, or essay based.

The EPQ will develop and improve your own performance as a critical, reflective and independent learner. The qualification also helps develop skills such as planning, research, and critical thinking, alongside public speaking and presentation.

Units:

Unit 1: Dissertation

Unit 2: Investigation/Field Study

Unit 3: Performance

Unit 4: Artefact

Assessment:

Students select a topic of their choice, design and carry out research and reflect on the project process. Based on the choice of unit, students will then present a method of assessment tailored to each unit.

WHERE THIS COURSE COULD TAKE YOU

The EPQ is particularly beneficial for those students applying to Oxbridge and other highly competitive universities. Students often receive lower offers at competitive universities if they achieve at least an A grade in their EPQ.

EPQ is a highly valued and respected course which is designed to enhance a student's ability to work independently through the development and utilisation of a series of academic skills, all of which are beneficial to future study and employment.

For those looking to apply for university, the EPQ course provides excellent preparation for the kind of study required at degree level.

COURSE HIGHLIGHTS

- Study skills workshops delivered by a range of universities
- Trips to universities

FRENCH

A level (PEARSON EDEXCEL)

For more information, please visit: www.sfx.ac.uk/french



Oxford Learner's
French Dictionary

COURSE DESCRIPTION

Would you like to speak fluently in French-speaking countries around the world? Are you excited to explore French cinema and delve into the works of celebrated French authors?

Studying French at A level offers you the chance to immerse yourself in a rich cultural tradition and opens doors to global travel, study, and career opportunities. A level French has been developed to inspire students who have an appreciation of the language, literature, film and culture of the French-speaking world. You'll learn the French language through studying a range of social issues and trends, such as the changes in family structures in France, education and the world of work, politics, and culture (festivals and traditions, music, and media). You'll also delve into France's fascinating history, studying the impacts, challenges and benefits of immigration on France since the XIX century; and World War Two, specifically the German Occupation and the Resistance period.

You'll study a set film, *Entre Les Murs* by Laurent Cantet, and a book, *No et Moi* by Delphine Vigan which will be assessed through a target language essay. You'll also have the opportunity to carry out an independent research project which will be assessed within the Speaking exam.

Units:

YEAR 1: Theme 1: Changes in Society and Culture

Theme 2: Political and Artistic Culture in Francophone Countries
Film study

YEAR 2: Theme 3: Immigration and French Multicultural Society

Theme 4: The Occupation and the Resistance
Literature study

WHERE THIS COURSE COULD TAKE YOU

French can be combined with any other subject to add an international dimension to your A levels, and in higher education studies such as Joint Honours with another language, or French with a whole range of subjects such as business, marketing, or economics. Future career options you can consider with French include interpreting, translating, teaching, tourism, journalism, marketing, and international business.

Assessment:

Paper 1: Listening, reading and translation 40%

Paper 2: Written response to works and translation 30%

Paper 3: Speaking 30%

LANGUAGES AT SAINT FRANCIS XAVIER

Languages can be combined with any other subject to add an international dimension to your studies and your future career. The rest of the world most definitely does not "always speak English". At university, the Turing Scheme lets you study for a year abroad at a European university – whatever main subject you are taking. Few UK students can do this, because they usually do not have the language skills, but with an A level in a language you will be in a much stronger position to study art in Italy or politics in Spain or law in France.

OTHER LANGUAGES

Speakers of other languages who can prove their competence at GCSE standard can be entered for A level examinations.

NATIVE SPEAKERS

Native speakers of any of the languages that we offer (Italian, French, Spanish and Portuguese) with no GCSE qualification can still join the course provided their competence in the language is tested and discussed with the subject teacher and the head of department.

COURSE HIGHLIGHTS

● Trips to:

- The cinema, top universities, art galleries

GEOGRAPHY

A level (PEARSON EDEXCEL)

For more information, please visit: www.sfx.ac.uk/geography



COURSE DESCRIPTION

Are you curious about the dynamic tectonic processes that shape our planet? Do you want to understand why and how people migrate?

You're not alone: Geography is an exciting and relevant subject for our times. In this A level, you will get the opportunity to develop an in-depth understanding of physical and human geography, to explore the relationship between people and the environment and to become a critical, reflective and independent learner.

A level Geography will develop your skills in numeracy, graphs, mapwork, research, interpretation of data, debating, environmental awareness, team-based work and fieldwork techniques. You will gain insight into the forces shaping the present and future of our societies and environments.

Geography is a well-regarded A level that sits as comfortably with science subjects such as Biology, Maths, Physics and Chemistry, as it does with humanities such as History, Sociology, Politics, Business Studies and Economics. You can continue your Geography studies into higher education, and career paths include urban planning, civil engineering, overseas development, environmental services, as well as teaching, marketing, and journalism.

Units:

YEAR 1

Unit 1: Tectonic Processes and Hazards

Unit 2: Coastal Landscapes and Change

Unit 3: Globalisation

Unit 4: Regenerating Places

YEAR 2

Unit 1: The Water Cycle and Water Insecurity

Unit 2: The Carbon Cycle and Energy Security

Unit 3: Globalisation

Unit 4: Migration, Identity & Sovereignty

WHERE THIS COURSE COULD TAKE YOU

Jobs related directly to Geography include cartography, surveying, planning, environmental consultancy, GIS officer and teaching. The transferability of geographic knowledge and skills also make it one of the most popular qualifications for many other careers such as international aid, logistics and distribution, finance, tourism and transport.

Assessment:

80% of the marks are for three exams. 20% of the marks are for coursework which is an independent investigation of 3000-4000 words. (Four days of field work feeds into this coursework.)

COURSE HIGHLIGHTS

- Opportunities to attend conferences and hear keynote speakers/A level support.
- Outside speakers are invited to run workshops on core topics/share their insights on relevant issues.
- Fieldwork trips to the local area and key destinations within the London area.

WHAT OUR STUDENTS SAY

"I really enjoyed the Geography lessons and the subject matter is so relevant to many issues going on in the world today"

"If you follow the advice of the Geography teachers and regularly review your understanding of the course material you will succeed in this subject."

HISTORY

A level (PEARSON EDEXCEL)

For more information, please visit: www.sfx.ac.uk/history



COURSE DESCRIPTION

Do you want to understand the history that makes Britain unique? Are you fascinated by the forces and incidents that changed world history?

You can choose:

EITHER to explore the fascinating history of social, political and cultural change in twentieth century Britain and America, along with the persecution and resistance of women as witches in the early modern period,

OR the revolutionary conflicts of Stuart Britain and 20th century Russia, combined with the battle for civil rights in America from the Civil War to Obama's election.

Throughout the course, which includes source work, essays, research and debate, you'll develop your independent research skills and improve your ability to question and discuss. You'll also refine your ability to select and deploy evidence to support historical perspectives, and cultivate clear, concise and accurate written and oral skills.

We offer a choice of two History courses:

OPTION 1: Democracies in Change

Unit 01: Britain transformed: 1918-97

Unit 02: The USA 1955-92: conformity and challenge

Unit 03: The witch craze in Britain, Europe & North America: 1580-1750

Unit 04: Coursework on 20th Century Britain

OPTION 2: Revolutions & Empire

Unit 01: Britain 1625-1701: conflict, revolution and settlement

Unit 02: Russia in revolution: 1894-1924

Unit 03: Civil Rights and Race Relations in America: 1860-2009

Unit 04: Coursework on the development of the Russian Revolution

WHERE THIS COURSE COULD TAKE YOU

History is a well-respected A level, which many students continue to study at degree level. It is useful for any career – particularly those which involve research, analysing information and constructing arguments. History students often progress to careers in politics, the Civil Service, banking and management consultancy, journalism, teaching, law, public relations and advertising.

Assessment:

80% exam (Unit 1= 30%, Unit 2 = 20%, Unit 3 = 30%) and 20% coursework (4000-word essay)

COURSE HIGHLIGHTS

- Workshops at the National Archives and National Maritime Museum
- Trips to historical plays and films
- Join our Hidden History club
- Volunteer for the *Lessons from Auschwitz*
- Compete in the Historical Association's Great Debate.

WHAT OUR STUDENTS SAY

"The coursework was challenging but really rewarding. Being able to choose what question to research and which texts to use made me feel like I was in control – but it was still great to be able to fall back on the teacher's advice when needed."

ITALIAN

A level (PEARSON EDEXCEL)

For more information, please visit: www.sfx.ac.uk/italian



COURSE DESCRIPTION

Studying Italian A level is not just about learning to speak—it's a journey into Italy's incredible culture, history, art, fashion, design and music. If you wish to explore all this and more, Italian is your perfect start as it broadens your global opportunities!

Our Italian A level will give you un passaporto to understanding a rich culture on the Mediterranean. You'll learn a language skill that will stay with you for life. A level Italian has been developed to inspire students who have an appreciation of the language, literature, film and culture of Italian speakers. You'll learn the Italian language through studying a range of social issues and trends, such as the changes in family structures in Italy, education and the world of work, politics, and culture (heritage, music, and media).

You'll also delve into Italy's long history, studying the North-South divide, and the impacts, challenges and benefits of immigration in Italian society; and World War Two, specifically the rise of Mussolini, fascism and the journey from dictatorship to democracy. You'll study a set film, *I Cento Passi* by Tullio Giordana, and a book, *Io non ho Paura* by Niccolò Ammaniti which will be assessed through a target language essay. You'll also have the opportunity to carry out an independent research project which will be assessed within the Speaking exam.

Units:

- YEAR 1:** *Theme 1:* Change In Italian Society
Theme 2: Political And Artistic Culture In The Italian Speaking World
 Film study
- YEAR 2:** *Theme 3:* Evolving Italian Society
Theme 4: Fascism and Beyond
 Literature study

WHERE THIS COURSE COULD TAKE YOU

Italian can be combined with any other subject to add an international dimension to your A levels, and in higher education studies such as joint honours with another language, or Italian with a whole range of subjects such as Business, Marketing, or Economics. Future career options you can consider with Italian include: interpreting, translating, teaching, tourism, journalism, marketing, and international business.

Assessment:

Paper 1: Listening-reading-translation 40%

Paper 2: Written response to works and translation into target language 30%. One essay on a film and one essay on a book.

Paper 3: Speaking 30%

LANGUAGES AT SAINT FRANCIS XAVIER

Languages can be combined with any other subject to add an international dimension to your studies and your future career. The rest of the world most definitely does not "always speak English". At university, the Turing Scheme lets you study for a year abroad at a European university – whatever main subject you are taking. Few UK students can do this, because they usually do not have the language skills, but with an A level in a language you will be in a much stronger position to study art in Italy or politics in Spain or law in France.

OTHER LANGUAGES

Speakers of other languages who can prove their competence at GCSE standard can be entered for A level examinations.

NATIVE SPEAKERS

Native speakers of any of the languages that we offer (Italian, French, Spanish and Portuguese) with no GCSE qualification can still join the course provided their competence in the language is tested and discussed with the subject teacher and the head of department.

COURSE HIGHLIGHTS

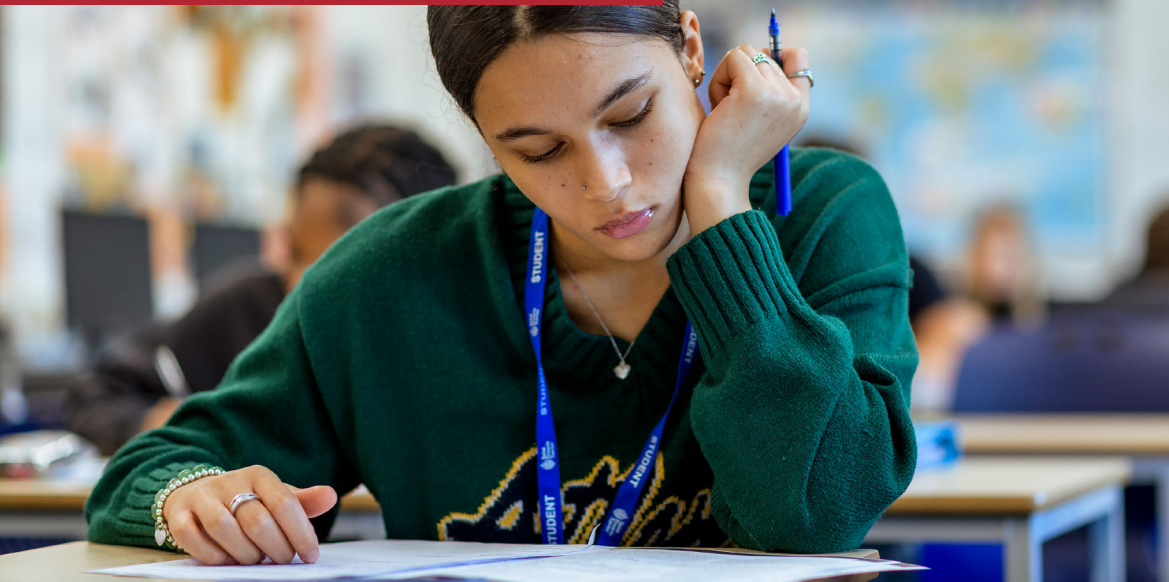
• Trips to:

- The cinema, top universities, art galleries

LAW

A level (OCR)

For more information, please visit: www.sfx.ac.uk/law



COURSE DESCRIPTION

Do you want to know the difference between criminal law and tort law? Are you fascinated by the intersection of law and moral values?

If so, you might like to consider A level Law. It's a challenging, dynamic and insightful subject, highly valued by employers and universities alike. You'll learn all about the English legal system, how laws are made, the key areas of criminal law and tort (civil) law, as well as how law achieves justice, and impacts society, morality and technology.

The law is highly complex, and this A level addresses real-life situations to make sense of it. It explains how it governs our behaviours and the ways we interact with institutions and each other. You'll learn how to analyse situations and apply legal rules and principles to make sense of the world.

Units:

Component 1: The Legal System and Criminal Law

Component 2: Law Making and the Law of Tort

Component 3: The Nature of Law and Human Rights

Assessment:

100% examination at the end of two years

WHERE THIS COURSE COULD TAKE YOU

A level Law is an academic subject and combines well with several other subjects including History, Politics and English, Business and Accountancy. A level Law will open the door into higher education courses that need skills in evaluation and analysis.

After completion of the A level you can go on to higher education to do a degree in law or a related subject, or an apprenticeship in law or a law-related field.

Careers in law are many and varied, and include solicitor, barrister, arbitrator, coroner, judge, law lecturer, legal secretary, licensed conveyancer.

COURSE HIGHLIGHTS

- Trips to:
 - The High Courts of Justice
 - The Old Bailey
 - A local magistrates' court
 - The Houses of Parliament
 - The Supreme Court
- A range of guest speakers

LAW (APPLIED)

BTEC Level 3 National Extended Certificate in Applied Law (PEARSON EDEXCEL)

For more information, please visit: www.sfx.ac.uk/law



COURSE DESCRIPTION

Are you curious about how the English legal system works? Do you want to understand what happens when someone breaks the law – and gets caught?

If the answers are yes, this course offers you an engaging alternative to A level Law. You'll explore our legal system, the people who work in it, who and what influences our lawmakers, what happens to people who break the law, and what you could do if you were to be a victim of crime, or involved in a legal case.

You will delve into key components of the English legal system, along with areas of criminal and civil law. You'll be able to apply legal theories to case studies, topical examples and scenarios whilst debating legal issues that affect our lives. You'll be assessed through diverse assignments and controlled evaluations.

BTEC Level 3 Extended Certificate in Law can be taken alongside A level subjects or combined with other BTEC subjects as part of a vocational package.

Units:

Unit 1: Dispute Solving in Civil Law

Unit 2: Investigating Aspects of the Criminal Law and the Legal System

Unit 3: Applying the Law

Unit 4: Aspects of Family Law

Assessment:

50% coursework, 50% exam (externally assessed)

WHERE THIS COURSE COULD TAKE YOU

Applied Law opens a lot of doors to higher education. After you've completed the course, you can go on to do a university degree in law or in other subjects such as education, finance or business, or an apprenticeship in law or a related field, such as human resources.

COURSE HIGHLIGHTS

- Trips to:
 - The High Courts of Justice
 - The Old Bailey
 - A local Magistrates' Court
 - The Houses of Parliament
 - The Supreme Court
- A range of guest speakers

MATHEMATICS

A level (PEARSON EDEXCEL)

For more information, please visit: www.sfx.ac.uk/maths



COURSE DESCRIPTION

Do you see the beauty in numbers? Are you interested in a STEM or finance career?

Then A level Mathematics is a must for you. Covering topics such as algebra, geometry, trigonometry, exponentials and logarithms, numerical methods, vectors, statistics, probability and mechanics, it is a stimulating and challenging course. You'll develop key skills such as problem-solving, communication, logical reasoning and resilience, and Maths supports the study of many other A levels, including Physics, Chemistry and Further Maths.

Maths leads to versatile pathways and is well respected by employers and higher education. There is evidence to suggest that having a higher-level mathematics qualification may boost your future earning potential.

Units:

Paper 1: Pure Mathematics 1

Paper 2: Pure Mathematics 2

Paper 3: Statistics and Mechanics

Assessment:

100% exam

WHERE THIS COURSE COULD TAKE YOU

Quantitative maths skills are required in a wide range of occupations and activities, embracing not only the mathematical and physical sciences but also the social sciences, the humanities and the creative arts.

A level Mathematics is a required A level for continued university studies in many STEM and finance subjects, such as mathematics, physics, statistics, engineering, actuarial science, and economics, and desirable as part of any A level programme of study.

There are many careers open to Maths graduates, including: doctor, pharmacist, dentist, actuary, analyst, economist, engineer, accountant, financial adviser, cryptographer, and digital animator.

WHAT OUR STUDENTS SAY

"The teaching is very creative and fun. Studying Maths opens many pathways for my future."

"It helps develop my critical and analytical skills."

COURSE HIGHLIGHTS

- Students will have the opportunity to attend interactive shows and careers talks with a focus on the many potential applications of mathematics in employment, industry and academia.
- There will be the opportunity to take part in the Senior Maths Challenge and the Senior Team Maths challenge.

MATHEMATICS (STATISTICS)

A level (PEARSON EDEXCEL)

For more information, please visit: www.sfx.ac.uk/maths-statistics



COURSE DESCRIPTION

Do you love finding patterns in data and interpreting them? Do you enjoy using Maths in a practical way?

If so, you'll enjoy A level Mathematics (Statistics). Using and understanding data is becoming increasingly important in many areas of study and employment. Understanding statistics is a crucial skill, and this course aims to give you the tools you need to help you prepare for higher education and the workplace.

A Level Statistics appeals to students who want to study a mathematical subject, but not pure mathematics. Statistics particularly complements A level subjects such as Biology, Psychology, Geography, Business Studies and Economics. The emphasis is on using and applying statistics. You'll learn the appropriate interpretation of contexts, and the outcomes of statistical procedures.

Units:

Paper 1: Data and Probability

Paper 2: Statistical Inference

Paper 3: Statistics in Practice

Your studies will promote the use of the Statistical Enquiry Cycle in the following contexts:

- Statistical measures and graphs
- Probability distributions
- Correlation and regression
- Hypothesis testing
- Contingency tables and goodness of fit
- Experimental design
- Non-parametric tests

WHERE THIS COURSE COULD TAKE YOU

The course will help you develop the skills of statistical enquiry, and practise the underpinning statistical calculations and interpretation using real-world data and authentic contexts. Statistical skills help you progress to other subjects in higher education including sciences and social sciences as well as finance and business-related courses.

Careers for statisticians exist in almost every sector of employment due to the importance of big data in the structure of our society.

Potential careers paths open to students of Statistics include data analyst, data scientist, actuary, risk analyst, business intelligence analyst, operational research, market research, quality control, economist, freelance statistical consultant.

Assessment:

Three 2-hour examinations

COURSE HIGHLIGHTS

- Invited guest speakers to talk about their careers in statistical fields
- Opportunities to investigate higher education options related to the subject

FURTHER MATHEMATICS

A level (PEARSON EDEXCEL)

For more information, please visit: www.sfx.ac.uk/furthermaths



COURSE DESCRIPTION

Do you love Maths and want to challenge yourself further? Do you want to explore new branches of advanced mathematics?

A level Further Mathematics is an enjoyable, rewarding, challenging and empowering course aimed at students with a significant interest and ability in mathematics. You must take A level Maths alongside this course, because Further Maths continues to build upon it, delving into calculus and more complex algebra, and developing the applied mathematics.

Further Maths is designed to stretch and challenge students and prepare you for university courses in Mathematics and related quantitative and scientific subjects. You will be introduced to new branches of mathematics and extend your learning significantly beyond the A level course.

Units:

Paper 1: Core Pure Mathematics 1

Paper 2: Core Pure Mathematics 2

Papers 3 and 4: Further Mathematics Optional Papers

Assessment:

100% exam

COURSE HIGHLIGHTS

- In addition to the offers open to A level Mathematicians, students in Further Mathematics will be encouraged to attend courses, workshops and seminars intended to further develop important skills in problem-solving and reasoning.

WHERE THIS COURSE COULD TAKE YOU

Further Mathematics is one of the most highly respected Level 3 qualifications and would be a welcome addition to applications for any employment or academic courses. It's considered desirable for further study in Mathematics and many STEM subjects, and top universities consider it a prerequisite for courses which are heavily reliant on strong mathematical skills.

Careers you can consider with Further Maths include financier, accountant, banker, actuary, economist, engineer; teacher; doctor, pharmacist, dentist.

WHAT OUR STUDENTS SAY

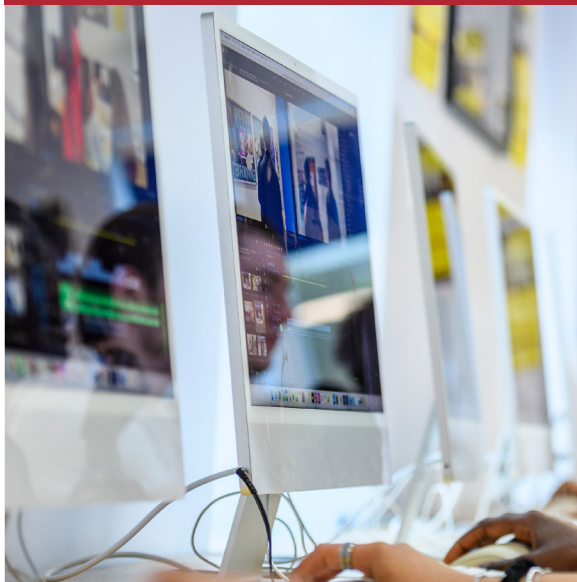
"It is fun and creative, plus the teachers make it easy to learn. Besides, who doesn't love a challenge!"

"It is challenging and it pushes me to improve my problem-solving skills."

MEDIA STUDIES

A level - EDUQAS (WJEC)

For more information, please visit: www.sfx.ac.uk/mediastudies



COURSE DESCRIPTION

Would you like to understand how media reaches and affects us all? Would you like to create your own production?

If so, A level Media Studies offers you the opportunity to develop a thorough and in-depth understanding of how the media shapes our perception of the world, using a comprehensive theoretical framework to support critical exploration and reflection, analysis and debate. The course provides you with the tools to develop a critical understanding and appreciation of the media through four interrelated areas:

Media language: how the media communicate meanings through their forms, codes, conventions and techniques

Representation: how the media portray events, issues, individuals and social groups

Industries: how the media industries' processes of production, distribution and circulation affect media forms and platforms

Audiences: how media forms target, reach and address audiences, how audiences interpret and respond to them, and how members of audiences become producers themselves.

Productions Skills: You are required individually to produce a major coursework project. You'll devise a media product, developing valuable practical skills in production and postproduction processes using industry-standard software available on our Apple Mac platform.

WHERE THIS COURSE COULD TAKE YOU

An A level in Media Studies sits comfortably with traditional subjects such as English or History, and is accepted by universities as one of three A levels. Media Studies provides a wide range of transferable skills that can lead you to study a variety of degree courses, and many of our students progress to study a media-related course at university. You will also be well qualified through your experience of the practical coursework element to pursue more vocational courses linked to media production and digital technology.

Units:

Component 1: Media Products, Industries and Audiences

Component 2: Media Forms and Products in Depth

Component 3: Cross-Media Production

Assessment:

70% exam, 30% production coursework

WHAT OUR STUDENTS SAY

"With the detailed lesson resources and the support of my media teacher, I have been able to use the analytical skills gained from Media Studies beyond academia. This course has taught me to look deeper into the media and has helped me understand the business-like minds of those within the industry. I highly recommend this course as it encourages looking beyond the surface of media products and has given me a lifetime of knowledge."

PHYSICAL EDUCATION (PE)

A level (OCR)

For more information, please visit: www.sfx.ac.uk/pe



COURSE DESCRIPTION

Would you like to understand why some people love physical activity and others don't? Do you want to learn how technology can improve sporting performance?

The A level in Physical Education (PE) lets you study PE in an academic setting, enabling you to critically analyse and evaluate your physical performance and apply your experience of practical activity to developing knowledge and understanding of the subject.

As a PE student you will develop theoretical knowledge and understanding of the factors - physiological and psychological - that affect physical activity and sport, and use this knowledge to improve performance. You'll understand the key socio-cultural factors that influence people's involvement in physical activity and sport and the role of technology.

In the physical component, you will refine your ability to perform effectively in physical activity and sport by developing skills and techniques, selecting and using tactics, strategies and/or compositional ideas, and developing your ability to analyse and evaluate to improve performance.

You will understand the contribution of physical activity to health and fitness. The NEA (coursework) lets you select a sporting activity and explore it in detail as a performer or coach. As part of the NEA, you will also analyse and evaluate performance in a chosen activity. The exam components of the course provide the knowledge and understanding to underpin the NEA.

WHERE THIS COURSE COULD TAKE YOU

A level PE prepares you for the further study of PE or sports science courses as well as other related subject areas such as Psychology, Sociology and Biology. You will also develop transferable skills, such as decision making and independent thinking, that are in demand by further education, higher education and employers in all sectors of industry.

A level PE is an excellent base for a university degree in sports science, sports management, healthcare, or exercise and health. It can also complement further study in biology, human biology, physics, psychology, nutrition, sociology and many more.

A level PE can open up a range of career opportunities including sports development, sports coaching, physiotherapy, personal training or becoming one of the next generation of PE teachers.

Units:

- Unit 1:* Physiological Factors Affecting Performance
- Unit 2:* Psychological Factors Affecting Performance
- Unit 3:* Socio-cultural Issues in Physical Activity and Sport
- Unit 5:* Practical Performance
- Unit 6:* Evaluating & Analysing Performance for Improvement (NEA)

Assessment:

Three written exams, a practical performance and the non-exam assessment (NEA).

COURSE HIGHLIGHTS

- Opportunities to play for the college sports teams in national, regional and county level in cricket, football, basketball, volleyball, table tennis, badminton and tennis.

PHYSICS

A level (AQA)

For more information, please visit: www.sfx.ac.uk/physics



COURSE DESCRIPTION

Do you wonder how motorcycles can race round sharp corners at an angle without tipping over? Do you know your electrons from your muons?

Then A level Physics will help you find answers to these, and many more scientific questions. Physics is the branch of science concerned with the nature and properties of matter and energy.

In Physics, you'll study topics you'll know from GCSE, such as materials, electricity, mechanics and waves in more detail and in a more mathematical way. The nuclear world takes centre stage with new modules in particle physics, gravitational fields, quantum physics and radioactivity, as well as mechanics and engineering. You'll become an excellent problem solver and scientific thinker, deft at working with numbers and calculations.

We strongly recommend that you study Physics with A level Mathematics, A level Further Mathematics or A level Statistics, as these are essential for most physical science or engineering-based degree courses.

Units:

- Module 1: Foundations in Physics
- Module 2: Electricity
- Module 3: Principles of Mechanics
- Module 4: Material Physics
- Module 5: Waves and Quantum Physics
- Module 6: Elementary Particle Physics
- Module 7: Advanced Particle Physics
- Module 8: Fields and its Applications
- Module 9: Further Mechanics
- Module 10: Nuclear Physics
- Module 11: Engineering Physics
- Module 12: Practical Endorsement

Assessment:

100% exam

WHERE THIS COURSE COULD TAKE YOU

A level Physics is an exciting and heavyweight course that opens up huge opportunities for a future in science. Many Physics students progress to university, and into careers such as: NHS medical physicist, development engineer, microwave metrologist, automation tester, graduate engineer (civil, mechanical, electrical, chemical), clinical scientist, data analyst, nuclear engineer, telecommunications researcher, astronomer, nanotechnologist, radiation protection practitioner, sound engineer, metallurgist, geophysicist and architect.

WHAT OUR STUDENTS SAY

"You might find some topics harder than others, but there will be a topic which you fall in love with and which you may find forms the basis of your future career"

"Honestly, there are so many interesting routes you can take with physics that I don't really mind where I end up in 10 years. The absolute dream would be to get a PhD and work at CERN, but as long as I'm doing something that interests me."

"You don't have to be amazing at maths to do it – and it does become easier with practice."

COURSE HIGHLIGHTS

- Work experience at Sir Robert McAlpine
- Trip to CERN in Geneva
- Work on the Maker Challenge with Imperial College
- Enter the Physics Olympiad
- Visit to a university for a Physics subject insight day, including practical sessions in the undergraduate laboratories
- Ex-students talk about their successful progression to higher education and career pathways.

POLITICS

A level (PEARSON EDEXCEL)

For more information, please visit: www.sfx.ac.uk/politics

COURSE DESCRIPTION

Do you wonder whether the First Past the Post voting system is fit for purpose? Do you think the USA now has an 'imperial' style Presidency?

As a Politics student, you'll develop knowledge and understanding of contemporary political structures such as Parliament and Congress in the UK and the USA. You'll have a critical awareness of the changing nature of politics and the relationships between political ideas, institutions and processes.

You'll study the influences and interests which have an impact on decisions in politics, such as the role of pressure groups and political parties, and develop an understanding of how effectively (or not) rights are protected by bodies such as the judiciary.

You'll have the skills to critically analyse, interpret and evaluate political information to form arguments, support them with contemporary evidence, and reach judgements on their significance and strength.

Topics include:

Has devolution gone too far? Do feminists have an agreed set of aims?

Units:

Component 1: UK Politics and Core Political Ideas

Component 2: UK Government and Non-core Political Ideas

Component 3: Comparative Politics

Assessment:

100% exam

WHERE THIS COURSE COULD TAKE YOU

Politics is a highly regarded A level subject, and students go onto study a wide range of university courses such as Politics and International Relations, History and Law.

Former SFX students now study at Warwick, Kings College London, and other Russell Group Universities.

Politics A level is useful for any career that involves analysis and evaluation skills.

WHAT OUR STUDENTS SAY

"This course helped me to understand what is happening on the news and why"

"Politics has also taught me how to evaluate an argument and how to explain why it is, or isn't convincing, using evidence to support my judgements"

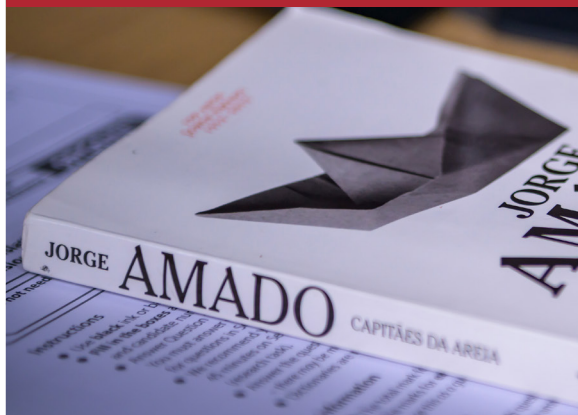
COURSE HIGHLIGHTS

- Visits to Parliament and the Royal Courts of Justice
- Meet MPs, including former SFX student Florence Eshalomi MP
- The chance to apply to become a member of the Advocacy Academy, a leading youth activist organisation.

PORTUGUESE

A level (PEARSON EDEXCEL)

For more information, please visit: www.sfx.ac.uk/portuguese



WHERE THIS COURSE COULD TAKE YOU

Portuguese can be combined with any other subject to add an international dimension to your A levels, and in Higher Education studies such as Joint Honours with another language, or Portuguese with a whole range of subjects such as Business, Marketing, or Economics. Future career options you can consider with Portuguese include: interpreting, translating, teaching, tourism, journalism, marketing, and international business.

COURSE DESCRIPTION

Would you like to converse in fluent Portuguese? Are you keen to learn about about Portuguese cinema, and the works of famous Portuguese writers?

Then our Portuguese A level will give you *um passaporte* to understanding a rich culture on the Atlantic. You'll learn a language skill that will stay with you for life. A level Portuguese has been developed to inspire students who have an appreciation of the language, literature, film and culture of the Portuguese-speaking world. You'll learn the Portuguese language through studying a range of social issues and trends, such as the changes in family structures in Portugal, education and the world of work, immigration and emigration, and culture (music and media).

You'll also delve into Portugal's rich history, studying immigration and multiculturalism in Portugal; Vasco da Gama's voyage to India; the dictatorship of Salazar and the journey from dictatorship to democracy. You'll study a set film, *Os Gatos Não Têm Vertigens* by António-Pedro Vasconcelos, and a book, *Os Capitães da Areia* by Jorge Amado which will be assessed through a target language essay. You'll also have the opportunity to carry out an independent research project which will be assessed within the Speaking exam.

Assessment:

You'll have three exam papers:

Paper 1: Translation into English, reading comprehension and writing (research question) in Portuguese 40%

Paper 2: Translation into Portuguese and written response to works (one book and one film) 30%

Paper 3: Listening, reading and writing in Portuguese 30%

Units:

YEAR 1: Theme 1: *Change In Contemporary Society*
Theme 2: *Political And Artistic Culture in Portuguese-speaking countries*
Film study

YEAR 2: Theme 3: *Migratory Movements*
Theme 4: *How History Shaped Politics*
Literature study

LANGUAGES AT SAINT FRANCIS XAVIER

Languages can be combined with any other subject to add an international dimension to your studies and your future career. The rest of the world most definitely does not "always speak English". At university, the Turing Scheme lets you study for a year abroad at a European university – whatever main subject you are taking. Few UK students can do this, because they usually do not have the language skills, but with an A level in a language you will be in a much stronger position to study art in Italy or politics in Spain or law in France.

OTHER LANGUAGES

Speakers of other languages who can prove their competence at GCSE standard can be entered for A level examinations.

NATIVE SPEAKERS

Native speakers of any of the languages that we offer (Italian, French, Spanish and Portuguese) with no GCSE qualification can still join the course provided their competence in the language is tested and discussed with the subject teacher and the head of department.

COURSE HIGHLIGHTS

• A level Portuguese has been developed to inspire students who have an appreciation of the language, literature, film and culture of the Portuguese-speaking world.

PSYCHOLOGY

A level (AQA)

For more information, please visit: www.sfx.ac.uk/psychology



COURSE DESCRIPTION

*Does human behaviour fascinate you?
Are you interested in helping people who have
psychological disorders?*

If that's of interest, then Psychology A level is for you! Psychology is the scientific study of human behaviour and experiences, and helps to explain why people are the way they are. It also helps us to understand our own behaviour by considering our experiences as well as our genetic make-up. This course aims to extend our everyday observations of human behaviour by exploring what is 'known' scientifically.

Psychology also examines psychological disorders, and the various ways of treating people who have them. Most of Psychology is literature based, including looking extensively at published research, although there are also sizable scientific and mathematical elements to the course.

Units:

Unit 01: Social influence, Memory, Attachment and Psychopathology

Unit 02: Approaches in Psychology, Biopsychology and Research Methods

Unit 03: Issues and debates in Psychology, Gender, Schizophrenia, and Forensic Psychology

Assessment:

100% exam

WHERE THIS COURSE COULD TAKE YOU

Psychology is widely regarded as one of the most versatile degrees you can have when accessing the job market after university. You can study either a BSc (Bachelor of Science), or a BA (Bachelor of Arts) in Psychology, so check individual university courses as they may vary.

Psychology is a useful A level if you want to go on to study psychology, counselling, youth work, international relations, politics, business, marketing or other social sciences at degree level.

COURSE HIGHLIGHTS

- Trip to Bethlem Royal Hospital
- Trip to annual psychology conference
- Trip to Freud's Residence and Museum
- SFX Clinical Psychologist talk

PSYCHOLOGY (APPLIED)

BTEC Level 3 National Extended Certificate in Applied Psychology (PEARSON EDEXCEL)

For more information, please visit: www.sfx.ac.uk/appliedpsychology



COURSE DESCRIPTION

Do you want to understand the human mind? Are you interested in learning how to conduct psychological research?

With the BTEC Level 3 National Extended Certificate in Applied Psychology, you will learn psychology as it applies to real life - helping you understand people and the societies we live in today.

In this Applied Psychology course, you'll learn all about the human mind and human behaviour, examining what makes us who we are, and why and how we make decisions. The course will increase your understanding of the world and people around you, and you will learn how to conduct psychological research, and review the accuracy of other people's research.

Applied Psychology will also help you understand what to do to facilitate good mental health, as well as focusing on psychological disorders and mental health issues. It also offers optional units so you can choose topics such as Criminal and Forensic Psychology or Applied Sport Psychology, helping you tailor your course to what you want to study.

The BTEC Level 3 National Extended Certificate in Applied Psychology is equal to one A level. It's a less theoretical, more practical course than A level Psychology and has a 60% coursework element (in addition to exams). You can take it alongside two other A levels or Level 3 National Extended Certificate subjects.

WHERE THIS COURSE COULD TAKE YOU

Psychology is widely regarded as one of the most versatile degrees you can have when accessing the job market after university. You can study either a BSc (Bachelor of Science), or a BA (Bachelor of Arts) in Psychology, so check individual university courses, as they may vary.

The BTEC Level 3 National Extended Certificate in Applied Psychology is useful if you are considering a career in counselling, therapy-based practices, business, healthcare, marketing, public relations, law, criminal and probationary services, criminology, child development or sport science.

Core Units:

Unit 1: Psychological Approaches and Applications

Unit 2: Conducting Psychological Research

Unit 3: Health Psychology

Optional units:

Criminal and Forensic Psychology

Promoting Children's Psychological Development

Introduction to Psychopathology

Applied Sport Psychology

Assessment:

External (exams), internal (assessed coursework) and synoptic (exams at the end of each year).

COURSE HIGHLIGHTS

- Trip to Freud's Residence and Museum
- Trip to Bethlem Royal Hospital

RELIGIOUS STUDIES: PHILOSOPHY, ETHICS & THEOLOGY

A level (OCR)

For more information, please visit: www.sfx.ac.uk/RS



COURSE DESCRIPTION

Does God exist? Can medical ethics ever allow someone to end their own life?

If you find yourself exploring big questions like these, Religious Studies is the A level for you. In RS we cover some of life's most fundamental philosophical questions: Is the world we are living in real? What happens when we die? If God is loving and powerful, then why does God allow suffering?

RS also questions society: Is religion sexist? Can medical ethics ever allow someone to end their own life? Do big businesses have a responsibility to society?

We also look more closely at one religion – Christianity or Hinduism – and study how it developed, examine key ideas from different perspectives, and see what it looks like in a modern world.

You will examine all of these issues in an analytical way, whilst developing key debating and critical thinking skills. You do not have to belong to a religion to enjoy this course, nor to have studied RS at GCSE - you just need to be interested and full of questions.

Students will also have the chance to gain a Level 3 NOCN qualification, which can lead to 8 additional UCAS points.

Units:

Unit 01: Philosophy of Religion

Unit 02: Religion and Ethics

Unit 03: Developments in Christian Religious Thought OR Developments in Hinduism – Eastern Philosophy

Assessment:

100% exam

WHERE THIS COURSE COULD TAKE YOU

Religious Studies is a highly valued academic subject for students hoping to study a wide variety of degrees at university. In recent years, our RS students have gone on to study medicine, law, international politics, history, philosophy, English, anthropology, psychology, theology and classical civilisations.

Studying RS can help you to build a career in many areas, including law, medicine, journalism, government departments and the Civil Service.

COURSE HIGHLIGHTS

- Visit to The British Museum
- Attending Holocaust education session at the Imperial War Museum, London
- The opportunity to visit Auschwitz in Poland as part of our Holocaust education training
- Day out to visit the Neasden Mandir, North London
- Attending live debates at King's College London and St Paul's Cathedral
- Day trips to universities for taster sessions and campus tours, including Cardiff, Roehampton, St Mary's Twickenham
- A day at the National Gallery examining themes from the course through art
- Trips to the cinema to explore Philosophy and Ethics through film

WHAT OUR STUDENTS SAY

"It is personally challenging and has helped me to be more appreciative of the diversity of thinking within religion."

SOCIOLOGY

A level (OCR)

For more information, please visit: www.sfx.ac.uk/sociology



COURSE DESCRIPTION

What is a blended family? Why do people join gangs?

A level Sociology will answer these questions, and many more. Sociology is the study of social life, social change, and the social causes and consequences of human behaviour. Since all human behaviour is social, the subject matter of Sociology ranges from the intimate family to the hostile mob; from organized crime to religious cults; from the divisions of race, gender and social class to the shared beliefs of a common culture.

Sociologists investigate the structure of groups, organizations, and societies, and how people interact within these contexts.

You'll find that Sociology makes you look at Britain and the world today in new ways, and provides greater awareness of society and your own place within it. You'll discover how to think critically for yourself and look at human behaviour from various perspectives.

Units:

YEAR 1

Unit 1: Socialisation, Culture and Identity

Unit 2: Families and Relationships

Unit 3: Research Methods

Unit 4: Understanding Social Inequalities

YEAR 2

Unit 5: Globalisation and the Digital Social World

Unit 6: Crime and Deviance

Assessment:

100% exam

WHERE THIS COURSE COULD TAKE YOU

A Level Sociology gives you a strong foundation for further study of a range of academic subjects at university such as law, English, economics, politics, history, management, sociology, psychology, marketing, media studies, philosophy, anthropology, theology, geography, classics, journalism and education.

Sociology can provide a strong foundation for a variety of different careers such as social work, policy making, law, journalism, the Civil Service, policing, nursing, politics, business, human resources, advertising and public relations.

COURSE HIGHLIGHTS

- Visiting speakers from SOAS University of London and Leicester University
- Trips to SOAS University of London and University College London
- Sociology taster days at Goldsmiths University of London

WHAT OUR STUDENTS SAY

"I do now see the world differently and my eyes are open to things that I never thought existed. I have gained new perspectives on various aspects of society and feel better equipped to face the challenges out there in the world."

SPANISH

A level (PEARSON EDEXCEL)

For more information, please visit: www.sfx.ac.uk/spanish



WHERE THIS COURSE COULD TAKE YOU

Spanish can be combined with any other subject to add an international dimension to your A levels, and in higher education studies such as joint honours with another language, or Spanish with a whole range of subjects such as Business, Marketing, or Economics. Future career options you can consider with Spanish include interpreting, translating, teaching, tourism, journalism, marketing, and international business.

COURSE DESCRIPTION

Do you want to communicate confidently in Spain and throughout Latin America? Are you inspired by the dynamic world of Spanish-language films, books, and cultural traditions?

Taking Spanish at A level gives you access to a fascinating and diverse heritage while opening up exciting opportunities for travel, careers, and further education around the world. A level Spanish has been developed to inspire students who have an appreciation of the language, literature, film and culture of Spanish speakers. You'll learn the Spanish language through studying a range of social issues and trends, such as the changes to family life in Spain, education and tourism, politics and culture (festivals and traditions, music, and media). You'll also delve into Spain's long history, studying immigration, the Spanish Civil War, Franco and the journey from dictatorship to democracy. You'll study a set film, *El Laberinto del Fauno* by Guillermo del Toro, and a book, *La Casa de Bernarda Alba* by Federico García Lorca which will be assessed through a target language essay. You'll also have the opportunity to carry out an independent research project which will be assessed within the Speaking exam.

Units:

YEAR 1: Theme 1: The Evolution of Spanish Society

Theme 2: Political And Artistic Culture in Spanish-speaking Countries
Film study

YEAR 2: Theme 3: Immigration and Spain's Multicultural Society

Theme 4: The Franco Dictatorship and the Transition to Democracy
Literature study

Assessment:

You will have three exam papers:

Paper 1: Listening-reading-translation 40%

Paper 2: Written response to works and translation into target language 30%

Paper 3: Speaking 30%

LANGUAGES AT SAINT FRANCIS XAVIER

Languages can be combined with any other subject to add an international dimension to your studies and your future career. The rest of the world most definitely does not "always speak English". At university, the Turing Scheme lets you study for a year abroad at a European university – whatever main subject you are taking. Few UK students can do this, because they usually do not have the language skills, but with an A level in a language you will be in a much stronger position to study art in Italy or politics in Spain or law in France.

OTHER LANGUAGES

Speakers of other languages who can prove their competence at GCSE standard can be entered for A level examinations.

NATIVE SPEAKERS

Native speakers of any of the languages that we offer (Italian, French, Spanish and Portuguese) with no GCSE qualification can still join the course provided their competence in the language is tested and discussed with the subject teacher and the head of department.

COURSE HIGHLIGHTS

- Cultural trips, such as the annual visit to El Teatro Cervantes to see the play of the book we study: *La Casa de Bernarda Alba*
- Study day at the BFI (British Film Institute) for the movie we study: *El Laberinto del Fauno*
- The Colombia vs. Spain match at London Stadium
- We always are on the lookout for interesting opportunities to organise cultural trips for our students
- A student exchange took place last year: 15 students welcomed Spanish students from IES Severo Ochoa (Seville) and then went to Spain to do a full immersion for 5 days.

T Levels



ACCOUNTING

T Level Technical Qualification (PEARSON EDEXCEL)

For more information, please visit: www.sfx.ac.uk/accountinglevel



COURSE DESCRIPTION

Do you want to study a subject that gives you access to an exciting financial career? Are you interested in learning the basics of finance to help you make informed decisions about money?

In that case, T Level Accounting will always be a useful qualification, whether you use the skills for personal finances, or in a job, helping to make business decisions. This course, equivalent to three A levels, covers the underpinning knowledge, concepts and skills that support threshold competence in the accountancy industry.

It includes a 45-day industry placement and is assessed by two externally-set core examinations and an employer set project.

You'll learn about a wide range of accounting tasks, from report preparation to ledger maintenance, bank statement reconciliation and cash flow forecasting.

When you undertake the T Level in Accounting you will also complete the Assistant Accountant occupational specialism component as part of this technical qualification. This will prepare you for a career as an assistant accountant, supporting qualified accountants in the business and finance sectors.

Assessment:

Core component: Two externally set exams and one externally set employer project

Occupational specialism component: one externally set assignment

WHERE THIS COURSE COULD TAKE YOU

Successful students can progress to a wide range of university courses, including accounting, finance, business and economics. There are also many employment opportunities, such as accountant, auditor, assistant accountant, payroll officer, accounts clerk and cashier, finance assistant, and in business.

Units:

YEAR 1: Unit 01: The Business Environment

Unit 02: Careers Within the Finance and Accounting Professions

Unit 03: Regulation

Unit 04: Professionalism and Ethics/Equality, Diversity and Inclusion

Unit 05: Security And Risk

Unit 06: Professional Services

Unit 07: Fundamentals Of Law

Unit 08: Fundamentals Of Financial Accounting

Unit 09: Technology

Unit 10: Data Driven Innovation/Analytics and Design Thinking

Unit 11: Research Skills

Unit 12: Project/Change Management and Administration

Unit 13: Fundamentals Of Financial Accounting (Accounting Pathway Content)

YEAR 2: You will complete the employer set project based on the units above.

EDUCATION AND EARLY YEARS

T Level Technical Qualification (NCFE)

For more information, please visit: www.sfx.ac.uk/educationandearlyyears



WHERE THIS COURSE COULD TAKE YOU

This course is suitable for anyone wanting a career in early years education. Successful completion will give you a licence to practise, enabling you to enter the workforce as a qualified Early Years Educator.

Alternatively, you can undertake further study as an Early Years Foundation Stage teacher, where you can specialise in delivering the Early Years or Special Needs curriculum. You can also go on to university to study early childhood studies, education studies, youth studies, or other related degrees, such as primary teaching and social work.

COURSE DESCRIPTION

Do you like working with young children? Do you want a fulfilling career in early years education?

If so, this course prepares you to work with children between birth and five years, with knowledge of children up to nineteen years. It's ideal for anyone wanting a career in early years education.

You'll understand how children develop, all about safeguarding, health and safety and wellbeing, how to support education, team working with other people, how to work with special educational needs and disability, and equality and diversity, among several other relevant, fascinating topics.

This is a two-year course equivalent to three A levels. You will spend 60% of your time in the classroom, learning the skills that employers in the education sector will need, and 40% in relevant industry placements where you'll use those skills and gain practical, hands-on experience. You'll need to do a minimum of 750 hours of industry placement to gain your Early Years Educator status.

Assessment:

Year 1: Two written exams (35% each) and one employer-set project (ESP) (30%)

Year 2: Synoptic assessments (3 assignments) and placement competencies

Units:

YEAR 1: Core Component

- Wider Context
- Child Development
- Supporting Education
- Safeguarding, Health and Safety and Wellbeing
- Behaviour
- Observation and Assessment
- Equality and Diversity
- Special Educational Needs and Disability
- English as an Additional Language
- Parents, Families and Carers
- Working with Others
- Reflective Practice

YEAR 2: Occupational Specialism
(Early Years Educator)

- PO1:** Support and promote children's play, development and early education
- PO2:** Develop relationships with children to facilitate their development
- PO3:** Plan, provide and review care, play and educational opportunities to enable children to progress
- PO4:** Safeguard and promote the health, safety and wellbeing of children
- PO5:** Work in partnership with colleagues, parents, carers and other professionals to support children's development

MANAGEMENT AND ADMINISTRATION

T Level Technical Qualification (CITY & GUILDS)

For more information, please visit: www.sfx.ac.uk/management-administrationlevel



COURSE DESCRIPTION

Would you like to work in a managerial role? Are you interested in doing an industry placement as part of your qualification?

If the answers are yes, our T Level Technical Qualification in Management and Administration lets you acquire the skills you need to work within an administrative or managerial role, as well as providing valuable work experience through placements.

The mandatory Management and Administration Core component gives you the basics of knowledge and skills and a wide understanding of the industry and job roles. It develops the core skills that you will need to draw on when working within the industry.

Your choice of occupational specialism develops the knowledge, skills, and behaviours necessary to achieve 'threshold competence' (the point when you're ready to enter the industry) in an occupation.

Topics covered include Business Context, People, Quality Compliance, Project, and Change Management. This course includes a compulsory 315-hour (45 day) minimum industry placement.

Units:

Mandatory

Management and Administration Core

Standalone occupational specialism

Choose one from:

- Business Improvement
- Team Leadership/Management
- Business Support

WHERE THIS COURSE COULD TAKE YOU

You can apply for an apprenticeship, or progress to university on courses such as business and events management, business and psychology, business management; or go directly into employment in a wide range of jobs, such as supervisor, admin assistant, sales administrator, medical secretary, personal assistant, Civil Service admin officer, office manager, barrister's clerk, secretary, and many more.

Assessment:

Core component: Two externally set exams and one externally set employer project

Occupational specialism component: one externally set assignment

WHAT OUR STUDENTS SAY

"This course is fresh and innovative and great for new experiences, as well as helping you follow your career path with real industry experience"

"The most beneficial course for what I want to do in the future, it's hard work but has the greatest reward."

COURSE HIGHLIGHTS

- Gain industry insights through industry placements and work-related learning
- Opportunity to network with professionals, and develop employability and soft skills
- Trips and visits to related and relevant businesses

MEDIA BROADCAST AND PRODUCTION (CONTENT CREATION)

T Level Technical Qualification (PEARSON EDEXCEL)

For more information, please visit: www.sfx.ac.uk/mediabroadcastproduction



WHERE THIS COURSE COULD TAKE YOU

During the two-year programme, you will learn the core knowledge and skills that are needed for entry to a huge range of media, broadcast and production occupations. A T Level will allow you to progress straight into the sector at a junior level in media/broadcast production or continue your studies at higher or degree level, or a higher-level technical qualification. Potential careers include studio/live sound engineer, broadcast engineer, audio visual technician, stagehand, TV/film production assistant, video editor, lighting technician, radio broadcast assistant, TV/film assistant director, TV/film camera operator, TV/film director, TV/film producer.

COURSE DESCRIPTION

Are you fascinated by digital storytelling and content creation? Do you want to work in the media, broadcast and production sector?

If so, this T Level course, equivalent to three A levels with a 45-day work placement, is perfect for preparing you for a career in the media, broadcast and production sector. The two-year course gives you the unique blend of both academic and industry experience, with a work placement giving you the real-world skills you need for future employment.

You'll learn the core principles of the media industry and essential theories, alongside developing your professional and technical skills. You'll do practical work in our brand-new film studio and creative classrooms to develop technical skills, and will get the chance to work in two forms of media including, but not limited to: audio, moving/still image, and the written word. This will let you specialise in your own area of interest in the content creation/media production sector and study the topics detailed in the course units section.

The industrial placement, where you will spend the equivalent of 315 hours over the two years working alongside industry professionals is a fantastic, hands-on part of the course.

Assessment:

One written examination, an employer-set project and synoptic assignments. Every student must also complete and pass their placement in order to achieve the qualification.

Units:

Core content

You will develop an understanding of a broad range of issues relevant to the sector, including:

- The creative economy
- The individual in the creative industries
- Cultural context and vocabulary
- Audience and consumer needs
- Legal and regulatory requirements
- Professional standards and conduct in the workplace
- Equality, diversity and inclusion requirements
- Research skills
- Project methodology and administration
- Continued professional development

Occupational specialism

In addition to the core content, you'll also complete at least one module of occupation-specific content.

The specialisms available are:

- Creative media technician
- Events and venues technician
- Content creation and production

COURSE HIGHLIGHTS

- 9 weeks minimum working with an employer on an industry placement
- Present your creative work at our annual SFX Media Exhibition
- Learn to use industry standard equipment and software
- Access to our brand-new Film Studio, opened in September 2024



BTEC and UAL Extended Diplomas

CREATIVE PRACTICE: ART, DESIGN AND COMMUNICATION

Level 3 Extended Diploma (UNIVERSITY OF THE ARTS LONDON (UAL) AWARDING BODY)

For more information, please visit: www.sfx.ac.uk/creative-practice-art-design-and-communication



COURSE DESCRIPTION

Are you passionate about a career in the creative industries? Do you love experimenting with different kinds of creative media?

Level 3 Extended Diploma in Creative Practice is a full-time course for students like you who are committed to pursuing a career in the creative industries. You'll spend the first year developing your skills in 2D, 3D and 4D creative processes before choosing a specialist industry practice to explore in depth through self-directed projects during the second year. The course provides opportunities to explore your creativity through experimentation with elements of graphic design, textiles, illustration, sculpture and photography.

Units:

Unit 1: The Creative Process

Unit 2: Developing Creative Practice

Unit 3: Responding to a Set Brief

Assessment:

Assessment is entirely coursework-based, with final major projects at the end of each year of the diploma and extended diploma stages.

WHERE THIS COURSE COULD TAKE YOU

Our students typically progress to degree level study in art and design courses such as architecture, fashion and textiles, photography, graphics and illustration, product and interior design or fine art.

You may also progress to industry-based training or employment. Some may choose to progress to a Foundation Diploma in Art and Design, particularly if recommended as a next step by degree course providers.

WHAT OUR STUDENTS SAY

"The course challenges you to express your inner creativity."

COURSE HIGHLIGHTS

- Saint Francis Xavier Sixth Form College is an approved centre for the University of the Arts London Awarding Body, which enables us to offer our students opportunities for:
 - widening participation schemes
 - specialist summer schools
 - a supportive transition to higher education, including to UAL colleges

BUSINESS

Available as:

BTEC Level 3 National Extended Diploma

BTEC Level 3 National Diploma (taken alongside one other A Level)

For more information, please visit: www.sfx.ac.uk/businessbtec3



COURSE DESCRIPTION

Are you interested in developing knowledge of business? Do you want work experience as part of your course?

The Level 3 National Extended Diploma is a two-year, full-time course that meets entry requirements in its own right if you want to progress to higher education courses in business areas before entering employment.

It can also support learners who want to progress directly to employment in job roles in business or business management and higher apprenticeships in the business sector.

The course also addresses sector needs and skills gaps in areas such as finance, marketing and management. Students complete work experience as part of the course, preparing you for future employment.

Units:

YEAR 1

Unit 1: Exploring Business

Unit 2: Developing a Marketing Campaign

Unit 3: Personal and Business Finance

Unit 4: Managing an Event

Unit 9: Teambuilding in Business

Unit 17: Digital Marketing

Unit 27: Work Experience in Business

YEAR 2

Unit 5: International Business

Unit 6: Principles of Management

Unit 7: Business Decision Making

Unit 8: Recruitment and Selection Process

Unit 16: Visual Merchandising

Unit 19: Pitching a Small Business

WHERE THIS COURSE COULD TAKE YOU

The Level 3 National Extended Diploma in Business carries UCAS points and is recognised by higher education providers as contributing to admission requirements to many relevant university courses, such as business and management, business and finance, business with human resource management, business studies, international management, marketing and retail management.

With this qualification learners can also progress directly into employment. Potential areas of employment include junior business roles in marketing, administration, finance, financial services, procurement, events management, human resources, and other related areas in the business sector.

Assessment:

A variety of assessment methods are used including presentations, activities and written reports. Four of the units are assessed. Four are written or computer-based exams. The examined units account for approximately 40% of the overall grade.

COURSE HIGHLIGHTS

- Work experience opportunities for all students
- Opportunities to take part in enterprise activities
- Practical and interactive learning to build a portfolio of work
- Outstanding preparation for a business-related degree, apprenticeship or independent learning.

WHAT OUR STUDENTS SAY

"I really enjoyed my time studying Business at Saint Francis Xavier and it helped me get a place at my preferred university. I am glad that I came here and I will truly miss the College."

CREATIVE MEDIA PRODUCTION AND TECHNOLOGY

Level 3 Extended Diploma (UNIVERSITY OF THE ARTS LONDON (UAL) AWARDING BODY)

For more information, please visit: www.sfx.ac.uk/creative-media-production



WHERE THIS COURSE COULD TAKE YOU

Upon successful completion of the course, you will be well equipped to progress to entry-level positions in the media industry or apply for undergraduate study in a range of media related courses.

Progression to university from this course is high; students who want to advance into photography, film and media typically progress through a Foundation Diploma and then onto undergraduate courses.

The range of specialisms students apply for is diverse, but may include photography, film and television, fashion, animation, advertising, commercial photography, media and communication, visual communication, professional photography, photography and digital imaging and creative media production.

COURSE DESCRIPTION

Are you passionate about film and TV? Do you want to learn how to create your own media masterpiece?

This course is designed for students – like you - who have a strong interest in the study of moving image productions such as film or TV. Our programme of study is creative, critical and compelling in its approach, offering a unique combination of theory and practical work.

During the two-year course you'll work with leading practitioners, reaping the benefits of close supervision from industry-trained staff who are experienced in film, television and media production. Your studies will help you develop your appreciation of moving image and print media's rich artistic, social and political traditions.

Units:

- YEAR 1 - Unit 01:** Introduction to Media Processes & Technical Skills
Unit 02: Introduction to Design and Research Skills in Creative Media Production
Unit 03: Introduction to Professional Practice in Creative Media Production
Unit 04: Critical and Contextual Awareness in Creative Media Production
Unit 05: Investigating Audio Production and Technology
Unit 06: Investigating Visual Production and Technology
Unit 07: Investigating Interactive Production and Technology
Unit 08: Developing a Creative Media Production Project

- YEAR 2 - Unit 09:** Characteristics and Contexts in Creative Media Production
Unit 10: Engaging with an Audience in Creative Media Production
Unit 11: Preparing for Progression in Creative Media Production
Unit 12: Specialist Study in Creative Media Production
Unit 13: Extended Project in Creative Media Production at Level 3
Or
Unit 14: Extended Project in Creative Media Production at Level 4

Assessment: 100% coursework

COURSE HIGHLIGHTS

- Visit to the IntoFilm Festival and take part in UAL Insight Workshops
- Present your creative work at our annual SFX Media Exhibition
- Learn to use industry standard equipment and software
- Access to our brand-new Film Studio, opened in September 2024

ENGINEERING

CTEC Level 3 (OCR)

For more information, please visit: www.sfx.ac.uk/engineering



We're waiting to hear if this course is running next year. Please go to Page 21 for information about potential reform to BTECs and CTECs.

COURSE DESCRIPTION

How are bridges constructed? How do aeroplanes get up in the sky and stay there?

If you frequently ask yourself questions like these, you'll enjoy our Engineering CTEC Level 3. Engineering is the fascinating, always changing study of how and why things work.

From electronics to mechanics, the engineering concepts covered will broaden your understanding of how things function. You will apply mathematical understanding in a practical setting and build towards researching and designing your own experiments.

This course allows you to develop the knowledge, understanding and skills required for progression into a range of roles within the engineering industry using relevant software throughout the course. You'll gain a thorough grounding in engineering theory and principles, putting these into practice through classroom experiments, industry visits and university partnerships.

All of the skills developed will prepare you for an exciting future in whatever field of engineering you choose. There are many kinds of engineering to choose from according to your interests, as well as a huge range of jobs available. As an engineer, you can contribute to the world in a positive and enduring way.

Engineering is also complemented by Mathematics and Science.

Assessment:

Assessment is examination-based on the core units, with other units assessed via coursework.

WHERE THIS COURSE COULD TAKE YOU

A degree in many types of engineering at most UK universities or employment in a related field. Foundation degrees and HNDs are also available, and there is a vast selection of apprenticeships on offer in the UK.

Careers can include mechanical engineer, manufacturing engineer, materials engineer, electrical engineer, electronics engineer, petroleum engineer, chemical (process) engineer, biomedical engineer, technical sales engineer.

Units:

- Unit 01:* Mathematics for Engineering
- Unit 02:* Science for Engineering
- Unit 03:* Mechanical Engineering Design
- Unit 04:* Principles of Electrical and Electronic Engineering
- Unit 25:* Promoting Continuous Improvement

Examples of Further Units

- Unit 10:* Computer Aided Design (CAD)
- Unit 11:* Material Science
- Unit 12:* Mechanical Simulation and Modelling
- Unit 13:* Mechanical Operations
- Unit 15:* Pneumatics and Hydraulics
- Unit 20:* Business for Engineering
- Unit 22:* Environmental Engineering

COURSE HIGHLIGHTS

- Visit to a university for an engineering subject insight day, including practical sessions in the undergraduate laboratories.
- Ex-students speak to students about their successful progression to higher education and career pathways.
- Opportunity to apply for work experience
- Opportunity for students to build and test a product

FOOTBALL ACADEMY

Football Academy Programme with BTEC Level 3 National Extended Diploma or A levels (PEARSON EDEXCEL)

For more information, please visit: www.sfx.ac.uk/football



COURSE DESCRIPTION

Want to train like a pro while getting expert coaching and support every step of the way? Ready to level up your skills and be part of a team that pushes you to be your best?

You may have what it takes to join our Football Academy Programme. You take this alongside either BTEC Level 3 Extended Diploma in Sport and Exercise Science, or Business Studies, or 3 A levels you've selected (depending on prior qualification level).

As a student on the SFX Football Academy Programme, you'll receive the following specialised support:

- Football training sessions twice a week on an off-site full size 3G pitch for both male and female players
- Training led by UEFA qualified coaches
- Competing in 11-a-side London and national London cup tournaments, as well as the English College's League.
- Specialised strength and conditioning sessions in the fitness suite
- Matches to be recorded and performances analysed via HUDL, the market leaders in performance analysis
- Futsal competitions

Units:

The same as Sport and Exercise Science BTEC units OR Business Studies BTEC units OR the 3 A levels you select.

Assessment:

Coursework including written assignments, presentations, consultations, practical assessments, video evidence and creative work such as producing posters or models.

WHERE THIS COURSE COULD TAKE YOU

Students can progress from this course into a full-time football career or a variety of sports-related degrees at university, including sport and exercise science, physiotherapy, performance analysis, and personal training, as well as engineering, business and education.

Students also have the opportunity to take part in a football scholarship in the UK and abroad, specifically the USA.

WHAT OUR STUDENTS SAY

"Great one-to-one support from coaches and opportunities to progress to first team level at a variety of different clubs"

COURSE HIGHLIGHTS

- Nike football kit for every player
- Male and female players selected for professional academy and national trials

HEALTH AND SOCIAL CARE

BTEC Level 3 National Extended Diploma
(PEARSON EDEXCEL)

For more information, please visit: www.sfx.ac.uk/healthbtec3



We're waiting to hear if this course is running next year. Please go to Page 21 for information about potential reform to BTECs and CTECs.

WHERE THIS COURSE COULD TAKE YOU

Successful completion of this course can lead you onto higher education and/or employment within the sector. University courses studied after completion of the Extended Diploma include midwifery, nursing (all strands), psychology, social work, childhood studies, youth work, and teaching, to name just a few.

COURSE DESCRIPTION

Are you interested in a career in the healthcare sector? Would you like to work with all sorts of people who have specific needs?

Then our BTEC Level 3 National Extended Diploma in Health and Social Care is for you. Health and social care practitioners need to develop a knowledge base for working with people in every stage of their lives, and they need to know how their own experiences relate to health and wellbeing.

You will understand what it's like to work in the health and social care sector. You will learn about the responsibilities that healthcare workers need to understand and carry out.

These include safeguarding individuals with health and social care needs, making sure that personal information is handled properly, and preventing discrimination. You will also learn about working with people with specific needs, including ill health, learning disabilities, physical and sensory disabilities and the varying needs of people who occupy different age categories.

This two-year course explores the roles and responsibilities of anyone working within the health and social care sectors. Implementing research methods learned on the course, we dig into important aspects of health and social care which ultimately impact both service providers and users alike.

We also have a unit dedicated to work experience where you'll be spending a minimum of 100 hours in the sector.

Units:

YEAR 1: Unit 01: Human Lifespan Development

Unit 05: Meeting Individual Care and Support Needs

Unit 12: Supporting Individuals with Additional Needs

Unit 11: Psychological Perspectives

Unit 02: Working in Health and Social Care

Unit 07: Principles of Safe Practice in Health and Social Care

Unit 09: Infection Prevention Control

YEAR 2: Unit 03: Anatomy and Physiology for Health and Social Care

Unit 04: Enquiries into Current Research in Health and Social Care

Unit 08: Promoting Public Health

Unit 06: Work Experience in Health and Social Care

Unit 20: Understanding Mental Wellbeing

Unit 18: Assessing Children's Development Support Needs Work experience

Assessment:

Units are assessed through a range of activities: assignments, written tasks, role play, spoken presentations and displays. Students will submit a portfolio showcasing their learning and skills in the workplace.

COURSE HIGHLIGHTS

- Industry-related work experience in Year 2
- Online short courses linked to the caring sector that you can include in your CV
- Educational trips
- Guest speakers from the relevant industries
- Workshops
- Seminars

INFORMATION TECHNOLOGY

BTEC Level 3 National Extended Diploma (PEARSON EDEXCEL)

For more information, please visit: www.sfx.ac.uk/informationtechnology

We're waiting to hear if this course is running next year. Please go to Page 21 for information about potential reform to BTECs and CTECs.

COURSE DESCRIPTION

Are you ready to learn coding using Python, HTML, CSS and PHP languages? Do you want to learn skills for IT project management?

Then BTEC Level 3 National Extended Diploma in Information Technology may be just the course you're looking for. This course, which is equivalent to 3 A levels, has been designed for students like you to gain the abilities and knowledge necessary to succeed in the IT sector or further education.

You will learn about many aspects of computing: programming, data modelling, website building, IT project management, cybersecurity, computer graphics and IT service delivery, and their importance in modern communication technology.

Units:

YEAR 1: Unit 01: Information Technology Systems (Externally assessed)

Unit 02: Creating Systems to Manage Information (Externally assessed)

Unit 03: Using Social Media in Business (Mandatory – internally assessed)

Unit 04: Programming (Mandatory – internally assessed)

Unit 05: Data Modelling (Optional)

Unit 06: Website Development (Optional)

YEAR 2: Unit 08: Computer Games Development (Optional)

Unit 09: IT Project Management (Mandatory – internally assessed)

Unit 11: Cyber Security and Incident Management (Externally assessed)

Unit 12: IT Technical Support and Management (Optional)

Unit 14: IT Service Delivery (Externally assessed)

Unit 17: Digital 2D and 3D Graphics (Optional)

Unit 20: Enterprise in IT (Optional)

WHERE THIS COURSE COULD TAKE YOU

This course can lead to various opportunities in higher education and employment. The Extended Diploma is a useful support for accountancy, business and media courses. Many students go on to pursue degrees in fields such as computing, software engineering, cybersecurity, IT, business, human resources, multimedia, games design, and networks technology. Others opt for employment in these sectors and continue to receive further training while working.

Assessment:

Assessment will be conducted internally by teaching staff, and the grades will then be submitted to Edexcel for moderation. Some units will also be assessed through externally administered examinations.

COURSE HIGHLIGHTS

- Exploration of network types: Students delve into various network types and standards, from local to wide area networks, within our state-of-the-art lab
- Industry-leading work experience: Students gain invaluable work experience with renowned companies like BT, Barclays Bank PLC, and Transport for London.
- Maximised potential: Our commitment to students includes personalised support to achieve their highest grades and unlock their full potential.

WHAT OUR STUDENTS SAY

"Teachers across all subjects are highly knowledgeable and treat us like adults, entrusting us with advanced technical equipment such as hub networks and computer hardware."

"Learning programming languages I once thought were beyond reach has laid a solid foundation for my university studies."

PERFORMING AND PRODUCTION ARTS

Level 3 Extended Diploma (UNIVERSITY OF THE ARTS LONDON (UAL) AWARDING BODY)

For more information, please visit: www.sfx.ac.uk/performingual3



COURSE DESCRIPTION

Do you dream of performing on stage in a West End production? Do you prefer to work backstage on costume or set design?

As a student on the UAL Performing and Production Arts course you will develop your acting, singing, dance and production skills, working in our well-equipped rehearsal and performance spaces including the recording studio. During this course you will be performing live to a range of different audiences. By taking responsibility for backstage roles such as costume or set designer you will develop your technical theatre and production skills.

Throughout this course you will experience a range of live theatre. These experiences will give you the opportunity to become a multiskilled performer with strong production skills and the confidence to take on many different creative roles.

Units:

- Unit 01: Principles of Performance
- Unit 02: Engaging with an Audience
- Unit 03: Introduction to Professional Practice
- Unit 04: Critical and Contextual Performance
- Unit 05: Production Skills and Context
- Unit 06: Performance Skills and Context
- Unit 07: Preparation for Specialist Study
- Unit 08: Collaborative Performance Project
- Unit 09: Developing Performance and Production Skills
- Unit 10: Preparing for Progression
- Unit 11: Exploration of Specialist Study and Context
- Unit 12: Extended Project

WHERE THIS COURSE COULD TAKE YOU

A wide variety of careers in the theatre world, including working as an actor, musician, dancer amongst many more. There are also opportunities to progress to university and drama/dance school or to study music at a conservatoire.

Assessment:

Assessment is continuous; you will be assessed on your rehearsal and performance skills as well as your research and evaluation skills; you will showcase your work on a digital portfolio.

COURSE HIGHLIGHTS

- Theatre trips, that have included: The Lion King, Hamilton, The Curious Incident of the Dog in the Night-Time, Life of Pi, Othello, The Ocean at the End of the Lane, The Big Life and Sister Act.
- Professional workshops and industry information that have included: The National Theatre Backstage Tour, Shakespeare Workshop at The Globe, Audition, Working with Script and Devising Workshops with The Royal Central School of Speech and Drama.

WHAT OUR STUDENTS SAY

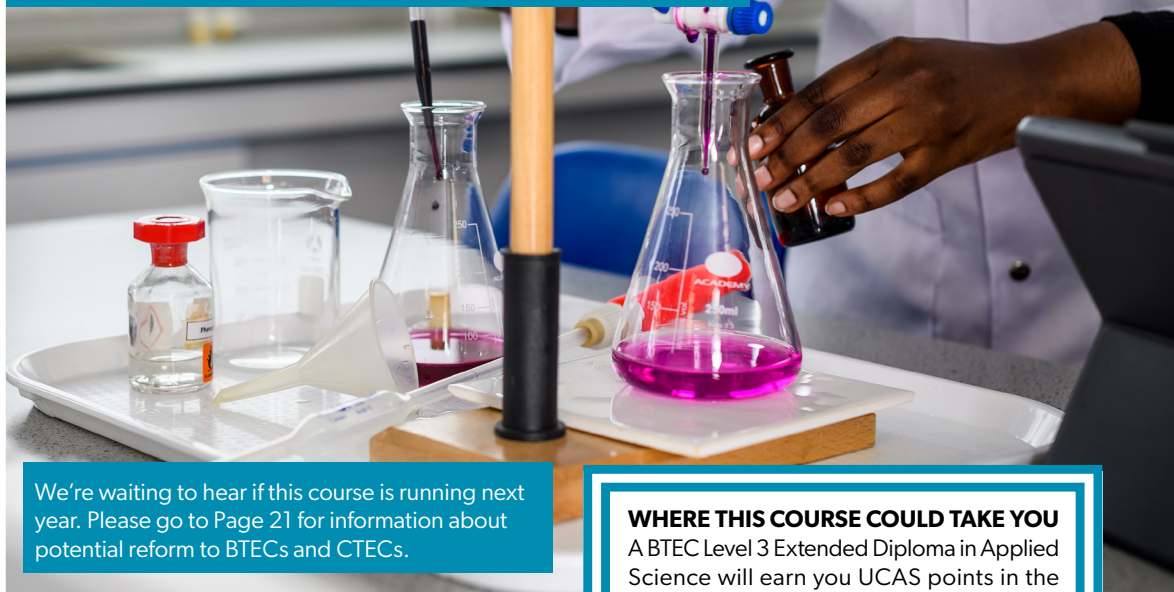
"A great course for creatives and performers. I would recommend it to potential students."

"This course has helped me develop immensely and gain confidence. It has helped me understand all the different options I can take for my future."

APPLIED SCIENCE

BTEC Level 3 (PEARSON EDEXCEL)

For more information, please visit: www.sfx.ac.uk/appliedscience



We're waiting to hear if this course is running next year. Please go to Page 21 for information about potential reform to BTECs and CTECs.

COURSE DESCRIPTION

Do you enjoy Biology, Chemistry, Physics and Maths, and can see yourself working in a science-related career? Do you prefer to learn practically, through research, coursework and experiments?

Then BTEC Level 3 Applied Science will help you go deeper into aspects of the sciences and develop the problem-solving, practical and data analysis skills that will make you desirable to employers in the science industry. You study over two years to achieve a qualification that's equivalent to three A levels.

This BTEC is specifically designed for students wanting to progress into higher education courses in the Applied Science sector before entering the world of work. You'll study Biology, Chemistry, Physics, Maths, and contemporary issues within science.

The course will also develop your practical skills and expertise with hands-on laboratory experience, workshops and project-based learning.

Units:

YEAR 1: Unit 01: Principles and Application of Science (externally assessed)

Unit 02: Practical Scientific Procedures and Techniques

Unit 03: Science Investigation Skills (externally assessed)

Unit 04: Laboratory Techniques and their Application

Unit 09: Human Regulation and Reproduction

Unit 12: Diseases and Infections

WHERE THIS COURSE COULD TAKE YOU

A BTEC Level 3 Extended Diploma in Applied Science will earn you UCAS points in the same way that A levels do. It will enable you to progress to degree courses including applied science, medical sciences, applied biology, applied chemistry, pharmacology, dental technology, nursing, sports studies, and therapy and exercise studies.

Alternatively, this qualification can also lead to direct employment in a science related area, such as laboratory work.

YEAR 2: Unit 05: Principles and Application of Science (externally assessed)

Unit 06: Investigative Project

Unit 07: Contemporary Issues in Science (externally assessed)

Unit 08: Physiology of Human Body Systems

Unit 14: Applications of Organic Chemistry

Unit 21: Medical Physics Applications

Unit 22: Materials Science (optional)

Assessment:

A mixture of examinations and written assignments.

COURSE HIGHLIGHTS

- Alumni visits, trips to top universities and research facilities

SPORT AND EXERCISE SCIENCE

BTEC Level 3 National Extended Diploma (PEARSON EDEXCEL)

For more information, please visit: www.sfx.ac.uk/sportbtec3



COURSE DESCRIPTION

Is a career in sport for you? Do you want to learn about all aspects of Sport Science?

The sports industry is worth over £39 billion to the UK economy and provides over a million jobs. The BTEC Level 3 Extended Diploma Sport and Exercise Science has an excellent reputation and attracts students from different backgrounds, including those competing in sport at county, provincial and even international level.

It enables you to prepare for university study as it is equivalent to three A levels and has a special focus on the sciences required for a career working in the sports industry, including physiotherapy, coaching, psychology and nutrition.

Students also participate in a work experience unit which is designed to provide you with experience in the sports industry.

Units:

Specialised Fitness Training, Applied Sports Psychology, Coaching for Performance and Fitness, Functional Anatomy, Applied Research Methods, Research Project, Sports Injury & Assessment, Sports Nutrition, Specialised Fitness Testing, Sport and Exercise Physiology, Field and Laboratory Based Fitness Testing, Nutrition for Sport and Exercise Performance, Sociocultural Issues in Sport and Exercise, Applied Research Methods in Sport and Exercise Science, Physical Activity for Individual and Group-based Exercise, Applied Sport and Exercise Psychology, Biomechanics in Sport and Exercise Science

WHERE THIS COURSE COULD TAKE YOU

This qualification enables you to go on to a variety of degree programmes including sport studies, sport and exercise sciences, physiotherapy, sport, physical activity and health, and nursing.

Successful students who gain extra qualifications in addition to studying Level 3 Sport and Exercise Science may wish to go straight into employment as sports coaches, sports psychologists, occupational therapists, PE teachers, personal trainers, fitness centre managers, nutritionists, physiotherapists, sports analysts, sport development officers, and many more.

Assessment:

This course is assessed mainly with coursework with a small element of exam assessment.

WHAT OUR STUDENTS SAY

"There is a good mix of classroom and practical teaching. We spend a lot of our lessons carrying out practical activities to supplement our learning."

COURSE HIGHLIGHTS

- Sports teams for several sports
- A large number of sports/activities offered, covering everything from Volleyball to Yoga
- Access to strength and conditioning training from specialist coaches
- Lectures on sports performance from guest speakers

TRAVEL AND TOURISM

BTEC Level 3 National Extended Diploma (PEARSON EDEXCEL)

For more information, please visit: www.sfx.ac.uk/travelbtec3



WHERE THIS COURSE COULD TAKE YOU

You can progress to a wide range of higher education courses, and ultimately to employment: including, but not limited to, travel and tourism and related industries. This qualification is recognised by higher education providers as meeting admission requirements to a variety of degree courses. In addition, you will develop transferable and employability skills such as self-confidence, self-presentation, interpersonal skills and time management - all of which are valuable and highly regarded for degree study and in the professional world.

COURSE DESCRIPTION

Do you enjoy helping other people plan their holidays? Do you want a career that gives you the opportunity to travel?

If so, our exciting, vocational BTEC Level 3 National Extended Diploma in Travel and Tourism is for you. Equivalent to 3 A levels, this course is designed to support students who are interested in learning about the travel and tourism industry alongside other areas of study.

On this course, you'll learn valuable, transferable skills such as business planning, budgeting, communication, presentation and sales techniques, using real businesses as case studies.

You'll:

- use data to analyse trends and their impact on tourism - one of the UK's fastest growing industries
- investigate and analyse global destinations - their features and popularity - through travel planning, trends and factors that affect their appeal
- develop a travel and tourism marketing plan that an organisation could use to attract and engage customers
- investigate both artificial and natural attractions - why they are commercially successful and appealing, how they respond to visitor needs, and why it's crucial to deliver memorable visitor experiences.

Our Travel and Tourism students are encouraged to study a modern foreign language; the languages we offer at SFX are Italian, French, Portuguese and Spanish.

Mandatory Units

Unit 01: The World of Travel and Tourism
(externally assessed)

Unit 02: Global Destinations (externally assessed)

Unit 03: Principles of Marketing in Travel and Tourism

Unit 04: Managing the Customer Experience in Travel and Tourism

Unit 05: Travel and Tourism Enterprises

Unit 16: Researching Current Issues in Travel and Tourism

Unit 17: Managing Accommodation Services

Unit 18: The UK as a Tourist Destination

Specialist Units

Unit 06: Specialist Tourism

Unit 07: Sustainable Tourism

Unit 11: Events, Conferences and Exhibitions

Unit 13: Work Experience in Travel and Tourism

Unit 15: Recruitment and Selection in Travel and Tourism

Assessment: Assessment is specifically designed to fit the purpose and objective of the qualification. It includes a range of assessment types and styles suited to vocational qualifications in the sector, such as practical activities, role plays and presentations. Some units are externally assessed, while others are internally assessed and externally verified.

COURSE HIGHLIGHTS

- Educational trips to complement classwork
- Visit to universities
- Educational talks at Thorpe Park on Customer Service and Marketing.
- Practical activities (role plays) which will help develop a variety of transferable skills
- Work experience



BTEC Level 2 Extended Certificate

BUSINESS

BTEC Level 2 First Certificate in Business (PEARSON EDEXCEL)
BTEC Level 2 Extended Award in Workskills (PEARSON EDEXCEL)

For more information, please visit: www.sfx.ac.uk/businesslevel2



WHERE THIS COURSE COULD TAKE YOU

An overall course grade of Merit or higher on the Business course will enable you to progress to a higher Level 3 qualification such as BTEC Level 3 Extended Diploma in Business (equal to three A levels).

Alternatively, using the skills learned on the Workskills qualification, students can enter employment or apply for a suitable apprenticeship.

COURSE DESCRIPTION

Are you interested in getting a good basic knowledge of business? Do you want to progress in a commercial career?

This one-year full-time programme will give you a broad educational base for a range of business careers.

It consists of two separate qualifications:

- BTEC Level 2 First Certificate in Business
- BTEC Level 2 Extended Award in Workskills

In the First Certificate in Business you'll cover all the basics: business finance – planning and forecasting, brand promotion, how to recruit a workforce, marketing, enterprise and business communication.

The Extended Award in Workskills looks at the value of teamwork, workplace equality and diversity, and getting the most out of work experience opportunities.

The programme will give you the qualifications you need to take the next step and progress onto a Level 3 BTEC. You can also take it alongside English Language or Maths GCSE retakes.

BTEC Level 2 First Certificate in Business

Units:

- Unit 01:* Enterprise in the Business World
- Unit 02:* Finance for Business
- Unit 03:* Promoting a Brand
- Unit 08:* Recruitment, Selection and Employment
- Unit 09:* Principles of Marketing
- Unit 13:* Financial Planning and Forecasting
- Unit 21:* Effective Business Communication

BTEC Level 2 Extended Award in Workskills

Units:

- Unit 5:* Celebrating Equality and Diversity in the Workplace
- Unit 13:* Working as Part of a Team
- Unit 16:* Planning & Learning from Work Experience

Assessment:

Various assessment methods are used, including presentations, activities and written reports. Two of the units are assessed by computer and written examination.

WHAT OUR STUDENTS SAY

"It's a great course to study as it helps you learn about the awareness of business and marketing in the world of work."

COURSE HIGHLIGHTS

- Work experience opportunities for all students
- Opportunities to partake in enterprise activities
- Trips to relevant businesses and locations
- Guest speakers and workshops

HEALTH AND SOCIAL CARE

BTEC Level 2 First Extended Certificate (PEARSON EDEXCEL)

For more information, please visit: www.sfx.ac.uk/healthlevel2



COURSE DESCRIPTION

Do you want to care for other people? Do you want to learn the fundamentals of health and wellbeing?

If so, this one-year, full-time course will give you the opportunity to gain a broad understanding of health and social care, as well as providing a more in-depth understanding of specific specialist areas. You'll learn about the roles of different care professionals such as nurses, hospital workers, social workers, youth and community workers, midwives, and care assistants, and the settings where they work.

The course also encourages students to gain and broaden your personal skill set and knowledge in order to prepare for a successful working life in the care sector.

Units:

External assessment:

Unit 01: Human Lifespan Development

Unit 09: Healthy Living

Internal assessment:

Unit 02: Health and Social Care Values

Unit 12: Creative and Therapeutic Activities in Health and Social Care

Unit 04: Social Influences on Health and Wellbeing

Unit 06: The Impact of Nutrition on Health and Wellbeing

Unit 03: Effective Communication in Health and Social Care

Unit 07: Equality and Diversity in Health and Social Care

Unit 08: Individual Rights in Health and Social Care

Unit 10: Human Systems and Care Disorders

WHERE THIS COURSE COULD TAKE YOU

Successful completion offers students several routes for progression into care work: direct entry into employment, further learning opportunities within employment, or progression to BTEC Level 3 Extended Diploma in Health and Social Care or industry related apprenticeships.

Assessment:

A combination of practical assessments, coursework, project work, and examinations. Certain modules will be externally assessed.

COURSE HIGHLIGHTS

- Guest speakers from the respective industries
- Workshops
- Seminars
- Volunteering opportunities with local companies and Kings College Hospital

WHAT OUR STUDENTS SAY

"This course is fresh and innovative and great for new experiences, as well as helping you follow your career path with real industry experience."

"The most beneficial course for what I want to do in the future, it's hard work but has the greatest reward."

INFORMATION TECHNOLOGY

BTEC Level 2 First Extended Certificate (PEARSON EDEXCEL)

For more information, please visit: www.sfx.ac.uk/itlevel2



WHERE THIS COURSE COULD TAKE YOU

This course can lead to various opportunities upon successful completion, including direct entry into employment within the IT business or industry, with potential training provided.

Alternatively, you can opt for further learning opportunities to progress to Level 3 of a vocational qualification in the same or a related area, such as the BTEC Level 3 Extended Diploma in IT.

COURSE DESCRIPTION

Are you fascinated by digital technology? Do you want to learn how organisations function in the information age?

This course will immerse you in the operational aspects of Information Technology within business and industry, applying these concepts through various assignments and projects.

You will conduct research on computer usage trends, utilise software packages for report writing, and develop presentations.

Additionally, you will have the option to undertake this course alongside retakes for GCSE English Language and Maths.

Core Units:

Unit 01: The Online World

Unit 02: Technology Systems

Unit 03: A Digital Portfolio

Examples Of Further Units:

Unit 08: Mobile Apps Development

Unit 10: Database Development

Unit 11: Computer Networks

Unit 13: Website Development

Unit 15: Installing and Maintaining Computer Software

Assessment:

Assessment for this course will be conducted by our teaching staff, with grades subsequently submitted to Pearson Edexcel for moderation. Some units will also feature externally assessed examinations.

COURSE HIGHLIGHTS

- ✔ Learn to analyse, design, and implement successful projects using spreadsheet and database software
- ✔ Gain skills in designing and creating engaging websites
- ✔ Hands-on opportunities to install and maintain software and network PCs in our well-equipped lab

WHAT OUR STUDENTS SAY

“The classes are well-resourced and structured. The Virtual Learning Environment (Google Classroom and other online resources) has abundant materials available for each unit, and the teachers guide us to the right resources for our tasks.”

“One aspect of the course that I particularly enjoyed was the interactive and creative nature of some assignments. Creating a website and installing software like Anti-Virus software were among my favourites. In conclusion, I have thoroughly enjoyed my time studying Level 2 IT at SFX College, and I am keen to continue this journey to university.”

CREATIVE MEDIA PRODUCTION AND TECHNOLOGY

Level 2 Diploma (UNIVERSITY OF THE ARTS LONDON (UAL) AWARDING BODY)

For more information, please visit: www.sfx.ac.uk/creativemedialevel2



COURSE DESCRIPTION

The UAL Level 2 Diploma in Creative Media Production introduces students to the essential skills, techniques and processes used in the media industry through a series of practical projects, allowing learners to develop both technical ability and creative confidence.

Alongside practical production work, students will build an understanding of the media landscape, audiences, and the creative process from idea to final product. The course emphasises hands-on experience with industry-standard equipment, teamwork, and problem-solving, preparing students for progression to Level 3 study.

Units:

- Unit 1* Introduction to creative media methods and skills
- Unit 2* Introduction to production techniques in creative media
- Unit 3* Understanding an audience in creative media production
- Unit 4* Contextual research for creative media production
- Unit 5* Exploring audio production and technology
- Unit 6* Exploring visual production and technology
- Unit 7* Exploring interactive media production and technology
- Unit 8* Personal project and presentation in creative media production

Assessment:

100% coursework

WHERE THIS COURSE COULD TAKE YOU

The UAL Level 2 Diploma in Creative Media Production is an exciting introduction to the creative industries. You'll develop practical skills in media production while learning to express your ideas with confidence. Successful completion allows you to progress onto any UAL Level 3 pathway, including Media, Art & Design, or Performing Arts. You'll also build a creative portfolio and gain the experience needed for further study, apprenticeships, or entry-level roles.

COURSE HIGHLIGHTS

- Present your creative work at our annual SFX Media Exhibition
- Learn to use industry standard equipment and software
- Access to our brand-new media studio

Introductory Diploma (Foundational Learning)



VOCATIONAL STUDIES

BTEC Level 1 Introductory Diploma (PEARSON EDEXCEL)

For more information, please visit: www.sfx.ac.uk/foundation



COURSE DESCRIPTION

*Do you want to get ready for the world of work?
Do you enjoy a practical course with the opportunity
of a work placement?*

You'll find the Introductory Diploma in Vocational Studies (sometimes referred to as Foundation Learning) flexible and personalised to meet your needs as an individual student.

The course is designed to encourage you to develop the personal skills and qualities you need for work and learning and to help you achieve your full potential. It is a practical "hands on" course, which includes a one-week work placement, taught in the context of real jobs and careers in various industries.

You will receive credits and/or individual certificates for the qualifications that you achieve within the framework.

Assessment:

Ongoing coursework.

WHERE THIS COURSE COULD TAKE YOU

An Introductory Diploma is equivalent to 4 GCSEs at grades D-G. When you've successfully completed the course, you may apply to proceed onto Level 2 courses.

Alternatively, you may go on to the world of work or training, such as an apprenticeship.

WHAT OUR STUDENTS SAY

"This course helped me to understand a lot more about Business."

"I enjoyed this course. It helped me improve my skills."

COURSE HIGHLIGHTS

- Work experience opportunity for all students
- Opportunities to take part in enterprise activities
- Practical and interactive learning to build a portfolio of work

ENTRY REQUIREMENTS

Your GCSE score can be calculated by adding all your grades and dividing by the number of exams taken. e.g., if you achieved 4 Grade 6 GCSEs and 5 Grade 8 GCSEs, your score can be calculated by adding up the total grades ($4 \times 6 = 24 + 5 \times 8 = 40$. Total grade count = 64), then dividing by the number of exams ($4 + 5 = 9$), giving a GCSE score of 7.1

Qualifications choices	Minimum entry requirements you'll need
4 A level/Level 3 Applied Diploma subjects (only recommended for exceptionally able students)	7 GCSEs at Grades 9-6, with a minimum of 4 at Grades 9-7, including English Language and Maths at Grade 6 or above
3 A level/Level 3 Applied Diploma subjects	6 GCSEs at Grade 4 or above, preferably including English Language or Maths at Grade 4 or above. An average GCSE Score of at least 4.3
Level 3 Extended Diploma or Level 3 Alternative Academic Qualifications (AAQs)	5 GCSEs at Grade 4 or above, ideally including English Language at Grade 4 OR BTEC Level 2 Diploma at Merit with English Language at Grade 4
T Level	5 GCSEs Grade 4 or above, including Grade 4 in Maths and Grade 4 in English Language
BTEC Level 2 Extended Certificate	4 GCSEs at Grade 3 or above with a minimum Grade 3 in English Language or Maths OR Pass in Foundation Learning
Foundation Learning	You'll need to show interest in the subject areas, a willingness to work hard, complete assignments within a set time scale and demonstrate exceptional attendance and punctuality

Subjects which require specified **minimum** Grades at GCSE

N.B. The following subjects do not require you to have studied them at GCSE level: Business, Classical Civilisation, Economics, Environmental Science, Geography, History, Law, Media, Physical Education, Politics, Psychology, Religious Studies, Sociology.

Linear A levels and Level 3 Applied Diplomas	
Art & Design (Fine Art)	Grade 4 in Art, Textiles or Graphic Design, if taken OR Minimum Merit in BTEC Level 2 Diploma in Art
Art & Design (Graphic Communication)	Grade 4 in Art, Textiles or Graphic Design, if taken OR Minimum Merit in BTEC Level 2 Diploma in Art
Art & Design (Photography)	Grade 4 in Art or Graphic Design, if taken OR Minimum Merit in BTEC Level 2 Diploma in Art <i>If you haven't taken an Art-related GCSE course, you may be admitted to the course if you satisfactorily complete a practical assessment task.</i>
Biology	Grade 6 in Maths and Grade 5 in English Language, Grades 7,6 in Combined Science, GCSE score of 4.8 or above OR Grade 6 in Maths and Grade 5 in English Language, Grade 6 in Biology
Business	Grade 4 in English Language and Grade 5 in Maths OR Grade 5 in English Language and Grade 4 in Maths
Chemistry	Grade 6 in Maths and Grade 5 in English Language, Grades 7,6 in Combined Science, GCSE score of 4.8 or above OR Grade 6 in Maths and Grade 5 in English Language, Grade 6 in Chemistry
Classical Civilisation	Grade 5 in English Language <i>We'll consider you if you have a Grade 4 in English Language and a Grade 5 in another humanities subject if we have availability</i>
Criminology	Grade 4 in English Language
Economics	Grade 5 in English Language and Grade 5 in Maths
English Literature	Grade 5 in English Language and Grade 5 in English Literature
English Language & Literature	Grade 5 in English Language and Grade 4 in English Literature OR Grade 4 in English Language and Grade 5 in English Literature
Environmental Science	Grade 5 in single science subjects, plus Grade 5 in Maths or Geography OR Grades 5,5 in Combined Science and Grade 5 in either Maths or Geography (you'll need a minimum of Grade 4 in Maths).
French	Grade 6 in French <i>If you're a native speaker without a GCSE in French, you'll be interviewed by our Head of Department</i>

Geography	Grade 5 in English Language and Grade 4 in Maths
History	Grade 5 in English Language <i>We'll consider you if you have a Grade 4 in English Language and a Grade 5 in another humanities subject if we have availability</i>
Italian	Grade 6 in Italian <i>If you're a native speaker without a GCSE in Italian, you'll be interviewed by our Head of Department</i>
Law	Grade 5 in English Language and English Literature
Law (Applied)	Grade 4 in English Language and English Literature
Maths	Grade 7 in Maths; GCSE score of 4.8 or above
Maths (Statistics)	Grade 6 in Maths
Further Maths	Grade 7 in Maths; GCSE score of 4.8 or above
Media Studies	Grade 5 in English Language
Physical Education	Grade 5,5 in Combined Science and Maths or English <i>If you play one sport to a high standard, discuss this with the Head of Department</i>
Physics	Grade 6 in Maths and Grade 5 in English Language, Grades 7,6 in Combined Science; GCSE score of 4.8 or above OR Grade 6 in Maths and Grade 5 in English Language, Grade 6 in Physics
Politics	Grade 5 in English Language <i>We'll consider you if you have a Grade 4 in English Language and a Grade 5 in another humanities subject if we have availability</i>
Portuguese	Grade 6 in Portuguese <i>(If you're a native speaker without a GCSE in Portuguese, you'll be interviewed by our Head of Department)</i>
Psychology	Grade 5 in English Language, Grade 5 in Maths and Grade 5,5 in Combined Science <i>We may consider you with a Grade 4 in Maths if we have availability</i>
Psychology (Applied)	Grade 4 or above in English Language, Maths and Double Science <i>(if you took single sciences, you'll need Grade 4 in two sciences)</i>
Religious Studies	Grade 4 in English Language
Sociology	Grade 5 in English Language or Grade 5 in Sociology <i>We'll consider you if you have a Grade 4 in English Language and Grade 5 or higher in Sociology or another humanities subject if we have availability.</i>
Spanish	Grade 6 in Spanish <i>If you're a native speaker without a GCSE in Spanish, you'll be interviewed by our Head of Department.</i>

Level 3 T Levels

N.B. These are two-year courses, and you will complete a minimum of 315 hours on industry placement. If you're an Education and Early Years student, you will complete 750 hours in industry placement.

Accounting	Grade 4 in English and Grade 5 in Maths
Education and Early Years	Grade 4 in English and Maths
Management and Administration (Business)	Grade 4 in English and Maths
Media, Broadcast and Production	Grade 4 in Media (if taken) and Grade 4 in English Language OR BTEC Level 2 Diploma in Media with Merit

Level 3 Extended Diplomas/Alternative Academic Qualifications (AAQs)

Applied Science	Grades 5,5 in Combined Science and Grade 4 in Maths OR BTEC Level 2 Diploma in Science with Merit and Grade 4 in Maths
Art, Design and Communication	Grade 4 in an Art-related qualification OR BTEC Level 2 Diploma in Art & Design with Merit
Business	Grade 4 in Maths and English Language OR BTEC Level 2 Diploma in a related area with Merit
Creative Media Production	Grade 4 in Media (if taken) and Grade 4 in English Language OR BTEC Level 2 Diploma in Media with Merit
Engineering	Grade 5 in Maths, Grades 5,5 in Combined Science OR Grade 5 in Maths, Grade 4 in <u>two</u> separate science GCSEs OR BTEC Level 2 Diploma in Engineering with Merit and Grade 5 in Maths
Football Academy	You can study Football Academy alongside A levels, BTEC Sport Science, BTEC Level 2 Business or BTEC Level 3 Business. You'll need to meet the entry requirements for your accompanying course. You'll also need to demonstrate a high level of football ability at our SFX football trials.
Health and Social Care	Grade 4 in Maths and Grade 4 in English Language preferred OR BTEC Level 2 Diploma in a relevant Level 2 qualification with Merit
Information Technology	Grade 4 in Maths OR BTEC Level 2 Diploma in ICT (or equivalent) with Merit and Grade 4 in Maths
Performing and Production Arts	Grade 4 in English Language or English Literature and Grade 4 in GCSE Music, Dance, Drama or Expressive Arts OR Grade 4 in English Language or English Literature and Pass in BTEC Level 2 Diploma in Performing Arts OR Grade 4 in English Language or English Literature and appropriate experience in music, dance or drama performance (you'll need to have a discussion with the Head of Department)
Sport and Exercise Science	Grade 4 in Core Science and Grade 4 in Maths and Grade 4 in English Language or Literature OR BTEC Level 2 Diploma in Sport (or equivalent) with Merit and Grade 4 in Maths
Travel and Tourism	Grade 4 in English Language OR Maths OR BTEC Level 2 Diploma in Travel and Tourism (or a related area) with Merit

Level 2 Extended Certificate Courses

Business	Grade 3 in English Language and Maths
Health and Social Care	Grade 3 in English Language and Maths
Information Technology	Grade 3 in English Language and Maths
Creative Media Production and Technology	Grade 3 in English Language and Maths

Level 1 Introductory Diploma

Vocational Studies	Interest in the subject areas, a willingness to work hard, complete assignments within a set timescale, and to demonstrate exceptional attendance and punctuality.
---------------------------	--



HOW TO GET TO SAINT FRANCIS XAVIER CATHOLIC SIXTH FORM COLLEGE

BUS

50 Croydon, Thornton Heath, Streatham, Stockwell
155 Tooting, Stockwell, Kennington, Elephant & Castle
249 Clapham, Streatham, Crystal Palace, Anerley
315 West Norwood, Streatham, Balham
355 Mitcham, Tooting, Balham, Brixton
690 West Norwood, Tulse Hill, Herne Hill, Brixton, Wandsworth Common
G1 Streatham, Tooting, Wandsworth Common, Clapham Junction

TRAIN

Balham station 12 minute walk
Clapham Junction 13 minute G1 bus ride

TUBE

Clapham South station
(Northern line) 4 minute walk



SAINT FRANCIS XAVIER CATHOLIC SIXTH FORM COLLEGE

10 Malwood Road
Balham
London
SW12 8EN

admissions@sfx.ac.uk
Switchboard: 020 8772 6000
Admissions: 020 8772 6072

    SFX6thForm
www.sfx.ac.uk

All information included in this prospectus correct at the time of going to print (Oct 2025)